



# Dehydrated Culture Media



# Contents

---

CRITERION™ Products	1
Supplements and Antibiotics	11
Blood Products	12
Petri Plates and Tubes	13

# CRITERION

DEHYDRATED CULTURE MEDIA

Choose from 250 standard formulas or request custom blending to your specifications. The innovative packaging designs and overall reliability make CRITERION™ the logical choice for culture media in your laboratory.

## Dehydrated Culture Media

## FEATURES & BENEFITS

### GRAY JAR

Opaque gray jar diminishes light penetration, prolonging performance and shelf life.

### WIDE MOUTH OPENING

- ✓ Allows for easy access to use a scoop when measuring the powder.
- ✓ Prevents inhalation hazards and reduces hazardous dust formations.
- ✓ No more shaking the bottle to dispense the media.

### INDUCTION SEAL

Peel-off induction seal prevents moisture from clumping the media, keeping it fresh and dry.

### REUSABLE SEAL

A built-in cushion seal inside the lid prevents moisture from entering the previously opened container.



# Packaged in 5 CONVENIENT SIZES



## 2 LITER POUCH

- Mylar® zip pouch bag
- Pre-measured to make 2 liters of culture media
- No need for weighing



## 500GM JAR

- 500gm bottle
- Stackable containers



## 2 KG BUCKET

- 2kg high density polyethylene buckets with handle, and locking screw top lid

## 10 KG BUCKET

- 10kg high density polyethylene buckets with handle, and locking screw top lid



## 50 KG BARREL

- 50kg high density polyethylene drum





# CUSTOM FORMULATIONS

**Need a specialized formulation?** Hardy Diagnostics is ready to assist you with your specific needs. Our Quality Management System is ISO 13485 certified and licensed by the FDA as an *In vitro* Medical Device Manufacturer, ensuring the highest standards of quality for our customers.

**Call: 800.266.2222 Today!**



PRODUCT DESCRIPTION	Mylar® Zip-Bag	500gm Bottle	2kg Bucket	10kg Bucket
A-1 Medium	C7570	C7571	C7572	C7573
Agar, Bacteriological Grade	C5000	C5001	C5002	C5003
Agar, Pharmaceutical Grade	C7430	C7431	C7432	C7433
Ampicillin Dextrin Agar Base (14)	C7580	C7581	C7582	C7583
Antibiotic Medium No. 19		C8321		
APT Agar	C5030	C5031	C5032	C5033
Azide Blood Agar Base (24)	C5040	C5041	C5042	C5043
Azide Dextrose Broth	C5050	C5051	C5052	C5053
BCSA Base	C8880	C8881	C8882	C8883
Bacillus Cereus Agar Base (1, 2)	C5060	C5061	C5062	C5063
Baird-Parker Agar Base (3, 12)	C5080	C5081	C5082	C5083
Barney Miller Agar	C9200	C9201	C9202	C9203
Beef Extract	C5100	C5101	C5102	C5103
Beef Heart Infusion	C8080	C8081		
BiGGY Agar	C5160	C5161	C5162	C5163
Bile Esculin Agar (30)	C5180	C5181	C5182	C5183
Bile Esculin Azide Agar	C5170	C5171	C5172	C5173
Bile Esculin Azide Broth	C5190	C5191	C5192	C5193
Bile Salts No. 3	C5200	C5201	C5202	C5203
Bismuth Sulfite Agar	C5210	C5211	C5212	C5213
Brain Heart CC Agar	C5150	C5151	C5152	C5153
Brain Heart Infusion Agar	C5120	C5121	C5122	C5123
Brain Heart Infusion Broth	C5140	C5141	C5142	C5143
Brilliant Green Agar	C5240	C5241	C5242	C5243
Brilliant Green Agar, Modified	C8690	C8691	C8692	C8693
Brilliant Green Bile Broth	C5250	C5251	C5252	C5253
Brilliant Green Bile Broth with MUG	C5280	C5281	C5282	C5283
Brucella Agar (24)	C5300	C5301	C5302	C5303

The numbers in parenthesis indicate supplements/antibiotics that can be added on page 11

PRODUCT DESCRIPTION	Mylar® Zip-Bag	500gm Bottle	2kg Bucket	10kg Bucket
Brucella Broth	C5310	C5311	C5312	C5313
Buffered Listeria Enrichment Broth Base (23)	C7800	C7801	C7802	C7803
Buffered Peptone Water	C5320	C5321	C5322	C5323
Buffered Peptone Water (Modified)	C6350	C6351	C6352	C6353
Caffeic Acid Agar	C7780	C7781	C7782	C7783
Campylobacter Agar Base (4) (24)	C5330	C5331	C5332	C5333
Casein, Acid Hydrolysate	C5340	C5341	C5342	C5343
Casman Agar Base, Modified(24)	C7620	C7621	C7622	C7623
Cellulose Agar, Modified	C8730	C8731	C8732	C8733
Cetrimide Selective Agar Base (15)	C5370	C5371	C5372	C5373
Charcoal Agar	C7600	C7601	C7602	C7603
CLED Agar	C5400	C5401	C5402	C5403
CM Broth, Modified	C7890	C7891	C7892	C7893
Columbia Agar Base (24)	C5450	C5451	C5452	C5453
Columbia CNA Agar Base (24)	C5470	C5471	C5472	C5473
Cooked Meat Medium		C5481		
Corn Meal Agar (10)	C5490	C5491	C5492	C5493
Cystine Tryptic Agar	C5510	C5511	C5512	C5513
Cytophaga Broth Base	C7790	C7791		
Cytophaga Agar Base	C7730	C7731		
D(+) Cellobiose	C7830			
D/E Neutralizing Agar, Modified	C5520	C5521	C5522	C5523
D/E Neutralizing Broth	C7370	C7371	C7372	C7373
Deoxycholate Citrate Agar	C5550	C5551	C5552	C5553
Deoxycholate Lactose Agar	C5560	C5561	C5562	C5563
Dermatophyte Test Medium (DTM)	C5570	C5571	C5572	C5573
Dextrose (Glucose)	C5580	C5581	C5582	C5583
Dextrose Broth	C5600	C5601	C5602	C5603
Dextrose Tryptone Agar	C5620	C5621	C5622	C5623
Dextrose Tryptone Broth	C5630	C5631	C5632	C5633
DNase Test Agar with Toluidine Blue	C5670	C5671	C5672	C5673
EC Medium	C5690	C5691	C5692	C5693
EC Medium Base, Modified (9)	C8090	C8091	C8092	C8093
EC Medium with MUG	C5680	C5681	C5682	C5683
EE Broth, Mossel	C8710	C8711	C8712	C8713
EMB Agar, HHT	C7330	C7331	C7332	C7333
EMB Agar, Levine	C5700	C5701	C5702	C5703

PRODUCT DESCRIPTION	Mylar® Zip-Bag	500gm Bottle	2kg Bucket	10kg Bucket
Esculin Mannitol Agar	C7590	C7591	C7592	C7593
Eugonic Agar		C5711		
Eugonic Broth		C5721		
Extract Broth	C5730	C5731	C5732	C5733
FB Broth Base	C7810	C7811	C7812	C7813
Fluid Thioglycollate Medium	C7500	C7501	C7502	C7503
Fraser Broth Base (5)	C5780	C5781	C5782	C5783
GC Agar Base (6) (22)	C5790	C5791	C5792	C5793
Gelatin	C7920	C7921	C7922	C7923
Group A Beta Strep Agar Base (24)	C5110	C5111	C5112	C5113
Half Fraser Broth Base (5)	C8040	C8041	C8042	C8043
HardyCHROM™ Candida	C9000	C9001	C9002	C9003
HardyCHROM™ Vibrio	C9010	C9011	C9012	C9013
Heart Infusion Agar	C5820	C5821	C5822	C5823
Heart Infusion Broth	C5830	C5831	C5832	C5833
Hektoen Enteric (HE) Agar	C5840	C5841	C5842	C5843
Hemoglobin Powder	C5850	C5851	C5852	C5853
Indole Nitrate Medium	C5870	C5871	C5872	C5873
Inhibitory Mold Agar	C5890	C5891	C5892	C5893
Kligler Iron Agar	C5910	C5911	C5912	C5913
Lactobacilli MRS Broth	C5930	C5931	C5932	C5933
Lactobacillus Selective Agar Base (25)	C6050	C6051	C6052	C6053
Lactose	C5950	C5951	C5952	C5953
Lactose Broth	C5940	C5941	C5942	C5943
Lauryl Tryptose Broth	C5980	C5981	C5982	C5983
Lauryl Tryptose Broth with MUG	C5990	C5991	C5992	C5993
Lethen Agar	C7360	C7361	C7362	C7363
Lethen Agar, Modified	C7900	C7901	C7902	C7903
Lethen Broth	C6020	C6021	C6022	C6023
Lethen Broth Modified	C7640	C7641	C7642	C7643
Listeria Enrichment Broth	C6030	C6031	C6032	C6033
Listeria Enrichment Broth, Modified (26)	C6360	C6361	C6362	C6363
Lowenstein Jensen Media Base (15)	C7380	C7381	C7382	C7383
Luria Agar Base, Miller (27)	C6310	C6311	C6312	C6313
Luria Broth Base, Miller	C6320	C6321	C6322	C6323

The numbers in parenthesis indicate supplements/antibiotics that can be added on page 11



PRODUCT DESCRIPTION	Mylar® Zip-Bag	500gm Bottle	2kg Bucket	10kg Bucket
L-Arabinose	C7840			
LB Broth, Modified		C8301	C8302	C8303
MacConkey Agar	C6130	C6131	C6132	C6133
MacConkey Agar with MUG	C6110	C6111	C6112	C6113
MacConkey Agar with Sorbitol	C6170	C6171	C6172	C6173
MacConkey Agar without Crystal Violet	C6120	C6121	C6122	C6123
MacConkey Broth	C6140	C6141	C6142	C6143
Malt Extract	C6210	C6211	C6212	C6213
Malt Extract Agar	C6200	C6201	C6202	C6203
Maltose	C6220	C6221	C6222	C6223
Mannitol Salt Agar	C6230	C6231	C6232	C6233
m Brilliant Green Broth	C7940	C7941	C7942	C7943
McClung Toabe Agar Base	C8250	C8251		
m Endo Broth	C7550	C7551	C7552	C7553
m Endo LES Agar	C7410	C7411	C7412	C7413
m FC Agar Base	C6270	C6271	C6272	C6273
m FC Broth Base	C8220	C8221	C8222	C8223
Middlebrook 7H9 Broth Base (27)		C6301		
Middlebrook 7H10 Agar Base (7) (15)	C6280	C6281	C6282	C6283
m Green Yeast and Fungi Broth	C7540	C7541	C7542	C7543
m PA Agar Base	C7950	C7951		
m PA-C Agar	C7960	C7961	C7962	C7963
mTEC Agar	C7740	C7741	C7742	C7743
Modified Casman (24)	C7620	C7621	C7622	C7623
Modified Plate Count Agar	C8190	C8191	C8192	C8193
Moeller Decarboxylase Broth Base	C6370	C6371		
Motility Indole Ornithine (MIO) Medium	C6330	C6331	C6332	C6333
Motility Medium S Base (17)	C6390	C6391	C6392	C6393
Mueller Hinton Agar	C6420	C6421	C6422	C6423
Mueller Hinton Broth	C7520	C7521	C7522	C7523
Muller Kauffman Tetrathionate Broth Base		C8481		
Mycobacteria 7H11 Agar Base (7, 15)	C6290	C6291	C6292	C6293
Mycobiotic Agar	C6430	C6431	C6432	C6433

PRODUCT DESCRIPTION	Mylar® Zip-Bag	500gm Bottle	2kg Bucket	10kg Bucket
Mycological Agar, pH 4.8	C8020	C8021	C8022	C8023
Mycoplasma Agar Base		C8281		
Mycoplasma Broth Base (30)	C8000	C8001	C8002	C8003
MYP Agar Base (21) (28)	C7400	C7401	C7402	C7403
Nitrate Broth	C6450	C6451	C6452	C6453
Nutrient Agar	C6460	C6461	C6462	C6463
Nutrient Agar with MUG	C7690	C7691	C7692	C7693
Nutrient Broth	C6470	C6471	C6472	C6473
Nutrient Gelatin	C6480	C6481	C6482	C6483
OF Basal Medium	C6500	C6501	C6502	C6503
Orange Serum Agar	C7510	C7511	C7512	C7513
Oxbile	C6510	C6511	C6512	C6513
Oxford Listeria Agar Base (8)	C6520	C6521	C6522	C6523
Pancreatic Digest of Casein (Casein Peptone)	C6530	C6531	C6532	C6533
Pancreatic Digest of Gelatin (Peptone G)	C6540	C6541	C6542	C6543
Papaic Digest of Soybean Meal (Peptone S)	C6550	C6551	C6552	C6553
Papaic Digest of Soybean Meal (Peptone S)		C6554**50kg Drum		
Peptic Digest Agar Base	C6560	C6561	C6562	C6563
Peptic Digest of Animal Tissue (Peptone A)	C7480	C7481	C7482	C7483
Peptone Water	C6570	C6571	C6572	C6573
Peptone Water with Lecithin and Tween*	C8180	C8181	C8182	C8183
Phenol Red Broth Base	C6590	C6591	C6592	C6593
Phenol Red Broth with Mannitol	C7630	C7631	C7632	C7633
Phenol Red Dextrose Broth	C8050	C8051	C8052	C8053
Phenylalanine Agar	C6600	C6601	C6602	C6603
Phenylethanol Agar (PEA)	C6610	C6611	C6612	C6613
Phosphate Buffer, pH 7.2		C8331	C8332	C8333
Plant Tissue Culture Agar - Grade Fine	C8930	C8931	C8932	C8933
Plant Tissue Culture Agar - Grade Course	C8940	C8941	C8942	C8943
Plant Tissue Culture Agar - Grade Purified	C8950	C8951	C8952	C8953
Potato Dextrose Agar (PDA)	C6620	C6621	C6622	C6623
Presence-Absence Broth	C6630	C6631	C6632	C6633
Proteose Peptone No. 3	C6640	C6641	C6642	C6643
Proteose Peptone	C6650	C6651	C6652	C6653

The numbers in parenthesis indicate supplements/antibiotics that can be added on page 11

PRODUCT DESCRIPTION	Mylar® Zip-Bag	500gm Bottle	2kg Bucket	10kg Bucket
Pseudomonas Cepacia (PC) Agar	C6660	C6661	C6662	C6663
Pseudomonas Isolation Agar Base (15)	C6680	C6681	C6682	C6683
Purple Broth Base	C6710	C6711		
Pyrodoxine Y Medium	C9120	C9121	C9122	C9123
Rappaport-Vassiliadis, USP	C8780	C8781	C8782	C8783
Rappaport-Vassiliadis Medium Base (MRSV) (semi-solid) (9)	C6740	C6741	C6742	C6743
Rappaport-Vassiliadis R10 Broth	C6730	C6731		
Reinforced Clostridial Medium	C8720	C8721	C8722	C8723
Rose Bengal Agar Base		C8101	C8102	
SabDex Agar with Chloramphenicol	C6780	C6781	C6782	C6783
SabDex with Lecithin and Tween *	C6800	C6801	C6802	C6803
SabHI Agar	C6790	C6791	C6792	C6793
Sabouraud Dextrose (SabDex) Agar	C6810	C6811	C6812	C6813
Sabouraud Dextrose (SabDex) Agar, Emmons	C6770	C6771	C6772	C6773
Sabouraud Dextrose (SabDex) Broth	C7560	C7561	C7562	C7563
Salmonella Shigella (SS) Agar	C6840	C6841	C6842	C6843
Selective Strep Agar Base (24)	C6890	C6891	C6892	C6893
Selenite Cystine Broth	C6920	C6921	C6922	C6923
SF Broth	C6930	C6931	C6932	C6933
Shigella Broth Base (29)	C9150	C9151	C9152	C9153
SIM Medium	C6940	C6941	C6942	C6943
Simmons Citrate Agar	C6950	C6951	C6952	C6953
Skim Milk Agar	C7930	C7931	C7932	C7933
Skim Milk Powder	C6960	C6961	C6962	C6963
Snyder Test Agar	C8110	C8111		
Sodium Chloride	C7720	C7721	C7722	C7723
Standard Methods Agar	C6980	C6981	C6982	C6983
Staphylococcus Medium No. 110	C6990	C6991	C6992	C6993
Staphylococcus Selective Agar	C7000	C7001	C7002	C7003
Starch Agar	C7010	C7011	C7012	C7013
Sterility Test Broth	C7610	C7611	C7612	C7613
Sucrose	C7020	C7021	C7022	C7023
TAT Broth Base (10)	C7030	C7031	C7032	C7033

PRODUCT DESCRIPTION	Mylar® Zip-Bag +	500gm Bottle	2kg Bucket	10kg Bucket
TCBS Agar	C7040	C7041	C7042	C7043
Tergitol 7 Agar (11)	C7050	C7051	C7052	C7053
Tergitol 7 Broth	C7910	C7911	C7912	C7913
Tetrathionate Broth Base (18)	C7060	C7061	C7062	C7063
Thiogelatin Medium	C8240	C8241		
Thioglycollate Medium without Indicator	C7080	C7081	C7082	C7083
Todd Hewitt Broth	C7090	C7091	C7092	C7093
Triple Sugar Iron (TSI) Agar	C7110	C7111	C7112	C7113
Tryptic Soy Agar (TSA)	C7120	C7121	C7122	C7123
Tryptic Soy Agar, 50kg Drum		C7124**50kg Drum		
Tryptic Soy Agar, Blood Base	C5220	C5221	C5222	C5223
TSA Blood Base, pH 6.8		C8131		
Tryptic Soy Agar, Blood Base, pH 7.4	C7990	C7991		
Tryptic Soy Agar with Lecithin and Tween®	C7130	C7131	C7132	C7133
Tryptic Soy Broth (TSB)	C7140	C7141	C7142	C7143
Tryptic Soy Broth (TSB) No. 2	C9140	C9141	C9142	C9143
Tryptic Soy Broth with Bile Salts No. 3	C8230	C8231	C8232	
Tryptic Soy Broth with Indicator	C8060	C8061	C8062	C8063
Tryptose Phosphate Broth		C7211		C7213
Tryptic Soy Broth without Dextrose		C8121		
Tryptone Glucose Extract Agar	C7160	C7161	C7162	C7163
Tryptose	C8070	C8071	C8072	C8073
Tryptose Agar	C7170	C7171		
Tryptose Broth	C7200	C7201	C7202	C7203
Universal Pre-Enrichment Broth	C7220	C7221	C7222	C7223
UVM Modified Listeria Enrichment Broth	C7240	C7241	C7242	C7243
Urea Base Concentrate (31)	C7230	C7231	C7232	C7233
Violet Red Bile Agar (VRBA)	C7260	C7261	C7262	C7263
Violet Red Bile Agar with MUG	C7250	C7251	C7252	C7253
Vogel and Johnson Agar Base (12)	C7280	C7281	C7282	C7283
WL Differential Medium	C7290	C7291	C7292	C7293
WL Nutrient Medium	C7300	C7301	C7302	C7303
XLD Agar	C7320	C7321	C7322	C7323
XLT4 Agar Base (20)	C8030	C8031	C8032	C8033
YM (Yeast Mold) Yeast Agar Base	C8890	C8891	C8892	C8893
Yeast Extract	C7340	C7341	C7342	C7343
Yersinia Selective Agar (CIN) Base	C5390	C5391	C5392	C5393

# Supplements and Antibiotics

No.	Product	Quantity	Cat. no.
1	Egg Yolk Suspension	1x100ml	R450290
2	Bacillus cereus Selective Supplement Polymyxin B	10x50,000IU/vial	SR099E
3	Egg Yolk Tellurite Emulsion, 100%	1x100ml	R450330
4	Campylobacter Selective Supplement (Karmali)	10 vials - 2 vials/L of medium	SR167E
5	Fraser Supplement	100ml vial	Z210
6	VCAT Selective Supplement	10 vials - 2 vials/L of medium	SR104B
7	Middlebrook OADC	1x100ml	U98
8	Listeria Selective Supplement	10 vials - 2 vials/L of medium	SR140E
9	Novobiocin Supplement	10x10mg	SR181E
10	Tween® 20	1x40ml	PS20
11	Triphenyl Tetrazolium Chloride Solution (0.05%)	10x5ml vials	SR148A
12	Potassium Tellurite (3.5%)	10x2ml vials	SR030J
13	Legionella BCYE Supplement	10 vials - 1 vial/100ml	SR110A
14	Ampicillin Selective Supplement	10 vials	SR136E
15	Glycerol	100gm	228210
17	Triphenyl Tetrazolium Chloride Solution (1%)	30ml vial	231121
18	Tetrathionate Supplement	50ml	Z129
20	XLT4 Supplement Tergitol 4	100ml vial	235310
21	Antimicrobial Vial P	6x10ml vials	232681
22	GC Growth Supplement, Vitox with diluent	10 vials - 2 vials/L of medium	SR090A
23	Buffered Listeria Enrichment Broth Supplement	10 vials - 1 vial per, 225ml	K183
24	Sheep blood, defibrinated	100ml screw cap	DSB100
25	Glacial Acetic Acid	500ml bottle	AC100
26	Middlebrook ADC Supplement	2 oz bottle	X95
27	Egg Yolk Enrichment 50%	10x10ml	215329
28	Novobiocin NaCl	16x100mm tube/pk 20	Z915A
29	Horse blood serum	500ml screw cap	SHS500
30	Agar, Bacteriological Grade	100ml	C5000

# Blood Products

Our animal blood is obtained from a veterinary supervised controlled herd that is kept free of antimicrobial drugs and disease.

<b>Horse Blood, Laked</b>		<b>Cat. no.</b>	<b>Rabbit Blood</b>		<b>Cat. no.</b>
100ml bottle, screw cap, each		270100	50ml bottle, sterile, screw cap, each		RB050
50ml bottle, screw cap, each		LHB050	100ml bottle, sterile, screw cap, each		RB100
100ml bottle, screw cap, each		LHB100	250ml bottle, sterile, screw cap, each		RB250
500ml bottle, screw cap, each		LHB500			
1000ml bottle, screw cap, each		LHB1			
<b>Horse Blood, Citrated</b>		<b>Cat. no.</b>	<b>Rabbit Blood, Defibrinated</b>		<b>Cat. no.</b>
50ml bottle, screw cap, each		HBC050	30ml bottle, screw cap, each		DRB030
60ml bottle, screw cap, each		230060	50ml bottle, screw cap, each		DRB050
<b>Horse Blood, Filtered</b>		<b>Cat. no.</b>	100ml bottle, screw cap, each		DRB100
125ml bottle, screw cap, each		SHS125	250ml bottle, screw cap, each		DRB250
500ml bottle, screw cap, each		SHS500	500ml bottle, screw cap, each		DRB500
<b>Horse Blood, Lysed</b>		<b>Cat. no.</b>	1L bottle, screw cap, each		DRB1
100ml PETG plastic bottle, screw cap, each		205100	<b>Chicken Blood, Alsevers</b>		<b>Cat. no.</b>
<b>Calf Serum, Filtered</b>			10ml bottle, screw cap, each		CBA010
100ml PETG plastic bottle, each		362100	20ml bottle, screw cap, each		CBA020
			30ml bottle, screw cap, each		CBA030
			50ml bottle, screw cap, each		CBA050
			<b>Guinea Pig Blood, Alsevers</b>		<b>Cat. no.</b>
			5ml bottle, screw cap, each		GPA005
			10ml bottle, screw cap, each		GPA010
			20ml bottle, screw cap, each		GPA020
			30ml bottle, screw cap, each		GPA030

## Sheep Blood Products

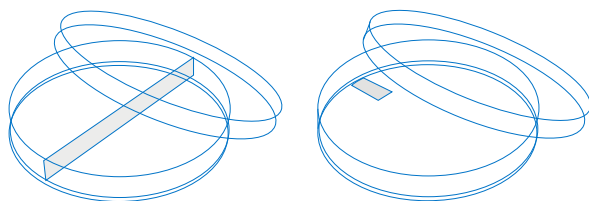
Our sheep blood is obtained from a controlled herd of sheep that are kept antibiotic and disease free. The sheep are kept for the sole purpose of providing high quality blood for your media.



<b>Sheep Blood, Defibrinated</b>	<b>Cat. no.</b>
15ml, screw cap	SB15
30ml, screw cap	SB30
50ml, screw cap	SB50
60ml, screw cap	SB60
100ml, serum cap	SB100S
100ml, screw cap	SB100
200ml, screw cap	SB200
500ml, screw cap	SB500
500ml, serum cap	SB500S

# Petri Plates

Our plastic polystyrene petri dishes are irradiated to ensure complete sterilization without toxic residue.



Description	Quantity	Cat. no.
Monoplate (for membrane filtration)	60x15mm, 500/case	3505
Contact Plate	65x15mm, 500/case	3550
Space-Saver™	100x10mm, 750/case	3311
Monoplate without stacking rings	100x15mm, 20/bag	330120
Monoplate without stacking rings	100x15mm, 500/case	3301
Monoplate with stacking rings	100x15mm, 520/case	3561
Monoplate with stacking rings	100x15mm, 575/case	3536
Biplate - 2 section	100x15mm, 24/pack	357220
Biplate - 2 section	100x15mm, 500/case	3302
Triplate - 3 sections	100x15mm, 500/case	3303
Quadplate - 4 section	100x15mm, 20/bag	330420
Quadplate - 4 section	100x15mm, 500/case	3304
Large (Mueller Hinton size)	150x15mm, 120/case	3525N

# Glass Tubes

Flat Bottom with Screw Cap

Size	Quantity	Cat. no.
13x100mm	1000/box	A13100
15x45mm	100/box	A1545
16x100mm	1000/box	A16100
16x125mm	1000/box	A16125
20x125mm	500/box	A20125





FM 572526

Hardy Diagnostics has a Quality Management System that is certified to ISO 13485 and is a FDA licensed medical device manufacturer.

**Headquarters**

1430 West McCoy Lane  
Santa Maria, CA 93455  
800.266.2222  
Sales@HardyDiagnostics.com  
HardyDiagnostics.com

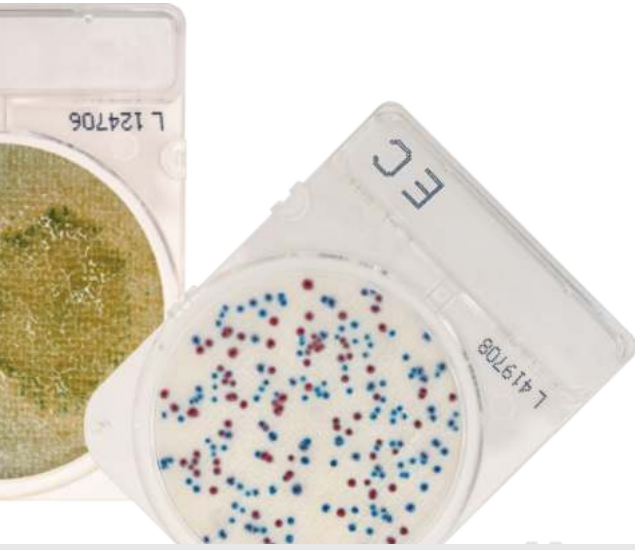
**Distribution Centers**

Santa Maria, California  
Olympia, Washington  
Salt Lake City, Utah  
Phoenix, Arizona  
Dallas, Texas  
Springboro, Ohio  
Lake City, Florida  
Albany, New York  
Raleigh, North Carolina

Copyright © 2022 Hardy Diagnostics







# Compact Dry™

There is always a better way.



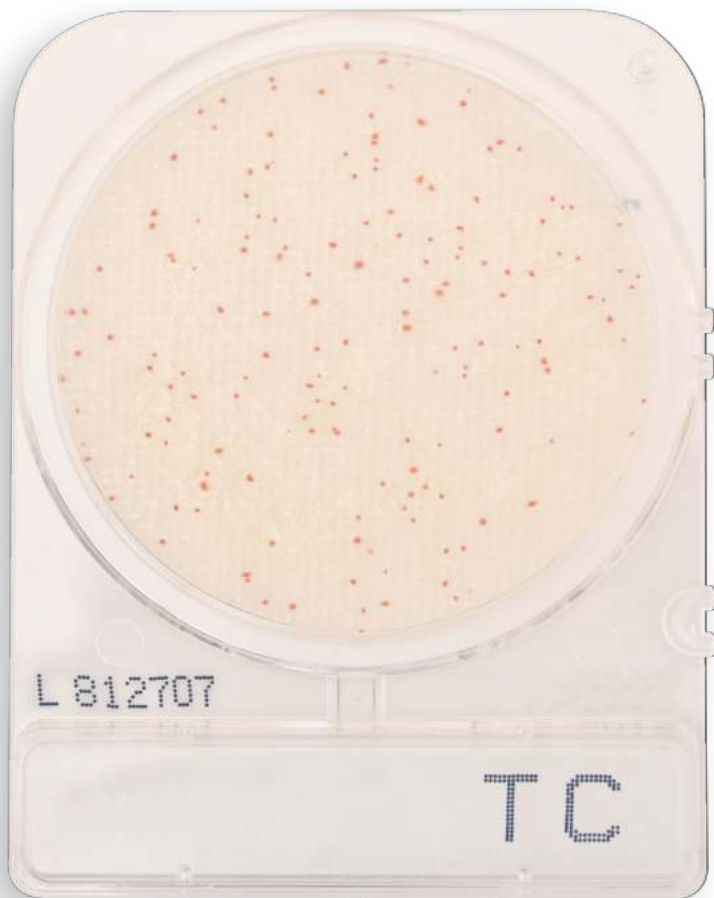
SIMPLE AND EFFECTIVE SYSTEM  
for Colony Counting

# CompactDry™

There is always a better way.

The CompactDry™ plate line presents a variety of organism-specific or total count tests, packaged nicely in a sophisticated and sturdy cassette.

***The benefits are easy to spot.***



AOAC Approved	MicroVal Approved	NordVal Approved
TC, EC, YM, YMR, XSA, ETB	TC, EC, YM, XSA, ETB	TC, EC, XSA, ETB
	MICROVAL 	

This product line is designed to save technician time while performing colony counts on Food, Beverage, Cannabis, Cosmetics, Environmental, Meat and Raw Material samples.

### RIGID TRANSPARENT CASSETTE WITH REMOVABLE LID

Keep your colonies intact with space between the media and lid. Easily remove the plastic lid for quick inoculation. Count your colored colonies clearly through the gridded back surface of the cassette.



### SELF-DIFFUSING MEDIA

1ml sample dropped in the middle of the plate turns the dry media to gel that diffuses evenly and automatically on the plate. No need for a spreader, no need for an extra step.



### DESIGNED TO STACK

Save precious incubator space with a product that is designed to stack in the incubator with low risk of contamination.



### ROOM TEMPERATURE STORAGE

Keep storage simple with plates that come with long shelf lives and can be stored long term at room temperature.



## CompactDry™ TC

### Total Count

For total aerobic viable bacterial count.  
Growing colonies will appear red.

240/pk

54081



## CompactDry™ EC

### *E. coli* and Coliforms

For the isolation and enumeration of coliforms  
and *E. Coli*. Coliform colonies will appear red,  
and *E. coli* colonies will appear blue.

240/pk

54082



## CompactDry™ YM

### Yeast and Mold

For the isolation and enumeration of yeast  
and mold. Yeast colonies will appear blue,  
and molds will form cottony colonies with  
characteristic colors.

240/pk

54083



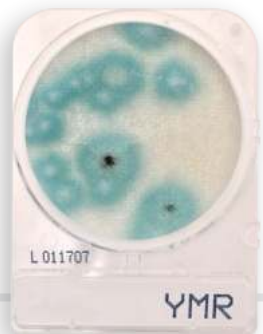
## CompactDry™ YMR

### Yeast and Mold Rapid

For the isolation and enumeration of yeast  
and mold. Yeast colonies will appear blue,  
and molds will form cottony colonies with  
characteristic colors.

240/pk

54084





## CompactDry™ XSA

### *Staphylococcus aureus*

For the selective growth, enumeration, and differentiation of *Staphylococcus aureus*. Growing colonies will appear blue green.

240/pk

54086



## CompactDry™ ETB

### *Enterobacteriaceae*

For the isolation and enumeration of *Enterobacteriaceae* that will appear magenta in color. Genera of *Enterobacteriaceae* consists of: *Citrobacter*, *Enterobacter*, *Escherichia*, *Klebsiella*, *Morganella*, *Proteus*, *Salmonella*, *Serratia*, *Shigella*, *Yersinia* and more.

100/pk

ETB100



## CompactDry™ LS

### *Listeria*

For the selective growth, presumptive identification, and enumeration of *Listeria* spp. Growing colonies will appear blue.

100/pk

LS100



## CompactDry™ SL

### *Salmonella*

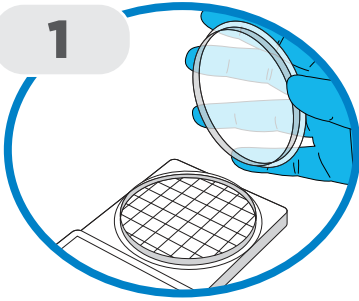
For the presumptive identification of *Salmonella* spp. Growing colonies will appear green or blue-green with black centers.

240/pk

54085

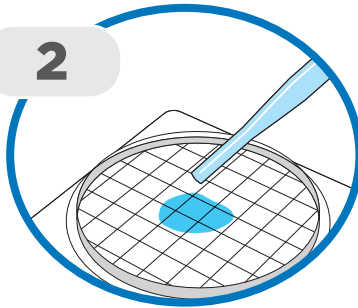
# HOW TO USE

1



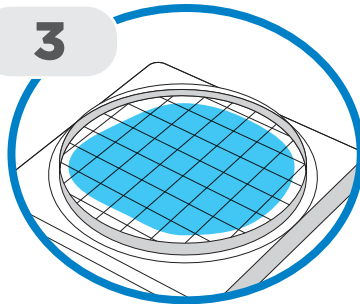
Remove protective lid from CompactDry™ plate.

2



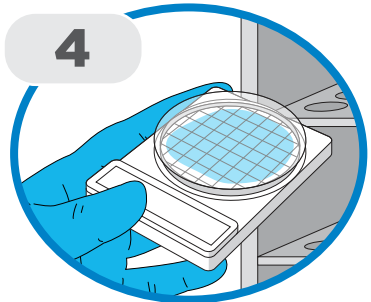
Drop 1ml of sample (dilute if necessary) in the middle of dry media.

3



Sample diffuses automatically, transforming the dry medium to gel.

4



Re-cap and incubate for prescribed time. Count the number of colonies on the new Wizard™ CompactDry™ Reader, Cat. no. CDR1. (Pg. 8)

*\*For SL100 inoculation procedure, please refer to the official instructions for use.*

# INCUBATION TEMPERATURE & TIME



CompactDry™ Product	Incubation Temperature	Incubation Time
Total Count	35 °C	44-48 hrs.
<i>E coli</i> & Coliforms	35 °C	20-24 hrs.
Yeast and Mold	25 °C	3-5 days
Yeast and Mold Rapid	25 °C	48 hrs.
<i>Staphylococcus aureus</i>	35 °C	24 hrs.
<i>Enterobacteriaceae</i>	35-37 °C	24 hrs.
<i>Listeria</i>	35-37 °C	24-28 hrs.
<i>Salmonella</i>	41-43 °C	20-24 hrs.

CompactDry™ plates come in sets of four connected plates, simplifying your serial dilution process.



*Introducing*

# The Wizard™

CompactDry™ Reader

**The Wizard CompactDry™ Reader**, a small instrument that will make a big impact on reducing the time spent counting colonies by hand.



Cat. no. CDR2

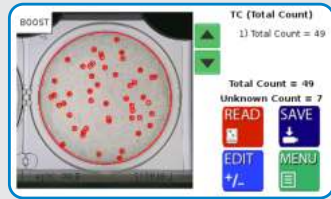
**Easy-to-use:** Flip the switch, select your configuration, insert your CompactDry™ plate(s), select read, and save your results! See how fast that was?

◆◆ *Designed exclusively for CompactDry™* ◆◆



## CONSISTENCY WHERE IT COUNTS

The Wizard™ brings precise colony counts to each and every set of plates, eliminating the risk of human error and inconsistency.



## YOUR COLONY COUNT IN SECONDS

Save technician hours on this simple and tedious task to maximize your throughput possibilities.

## SIMPLE IMPLEMENTATION

Easy-to-understand instructions make for simple Standard Operating Procedures, allowing you to easily train your team and begin utilizing automation for your colony counts.

## COMPLIANCE MADE EASY

Make data compliance easy in any lab with several ways to save your test results. Transfer to LIMS software, save directly to USB, or print your data.

# SERIAL DILUTIONS

## Diligent Shaker for use with Dilucup® Elegance!

### by LabRobot

The Diligent Shaker uses orbital rotation to make sure each dilution is thoroughly vortexed. It is activated by either an hands-free optical sensor or the optional foot pedal. The 42 LED indicators light each cup, letting you easily see what dilution well you are in.

**NEW**



### Features:

- Dimensions: 38cm x 29.5cm x 5cm
- 7" touch screen
- Two optical sensors, one at each side
- Can create and store testing templates, assuring standardization of method
- Programming with intuitive software
- 6 rows for 42 cups (7 x 6)
- Removable magnetic tray for 42 cups
- Export data to USB
- Bar code reading (*Diligent and Diligent Pro only*)
- Able to record sample ID and user ID (*Diligent and Diligent Pro only*)
- Full connectivity to LIMS (*Diligent Pro only*)
- Optional Footswitch, Cat. no. 40FS02

### Diligent Shaker Light

Store up to 2 templates. Data retrieval is manual only.

40DGT84LT

### Diligent Shaker Standard Version

Record sample ID, technical or user ID. Bar code scanner capability. Store up to 10 templates. Export data to USB.

40DGT84SD

### Diligent Shaker Pro

LIMS connectivity and traceability for data. Record sample ID, technical or user ID. Bar code scanner capability. Store up to 10 templates.

40DGT84P0



Long shelf life



Sterilized by irradiation



Room temperature storage

**NEW**

Dilucup Elegance BFD (Butterfield's Phosphate Buffer)	
40DEBFD3	Butterfield's Phosphate Buffer, dilution blank, 9ml fill, ready-to-use cups, 672 (2 x 16 x 21) total cups with 3 cups/row
40DEBFD6	Butterfield's Phosphate Buffer, dilution blank, 9ml fill, ready-to-use cups, 672 (2 x 8 x 42) total cups with 6 cups/row
Dilucup Elegance MRD (Maximum Recovery Diluent)	
40DEMRD3	Max Recovery Diluent, dilution blank, 9ml fill, ready-to-use cups, 672 (2 x 16 x 21) total cups with 3 cups/row
40DEMRD6	Max Recovery Diluent, dilution blank, 9ml fill, ready-to-use cups, 672 (2 x 8 x 42) total cups with 6 cups/row
Dilucup Elegance BPW (Buffered Peptone Water)	
40DEBPW3	Buffered Peptone Water, dilution blank, 9ml fill, ready-to-use cups, 672 (2 x 16 x 21) total cups with 3 cups/row
40DEBPW6	Buffered Peptone Water, dilution blank, 9ml fill, ready-to-use cups, 672 (2 x 8 x 42) total cups with 6 cups/row
Dilucup Elegance NaCl 0.85%	
40DENACL3	NaCl with buffer, dilution blank, 9ml fill, ready-to-use cups, 672 (2 x 16 x 21) total cups with 3 cups/row
40DENACL6	NaCl with buffer, dilution blank, 9ml fill, ready-to-use cups, 672 (2 x 8 x 42) total cups with 6 cups/row

## Dilushaker III for use with Dilucup® Elegance! by LabRobot

This system reduces technician time, cost, and strain by automatically vortexing each diluent the same way, every time.

**THE ORIGINAL**



- 21 cup tray Dilushaker™ III ..... 40DS21PRXT
- Power Supply ..... 40PS12
- Optional Footswitch ..... 40FS02
- Transport suitcase for 2 Dilushakers ..... 40TC1567

# ENVIRONMENTAL MONITORING

## TRIO.BAS™ MINI DESIGNED SPECIFICALLY FOR COMPACTDRY™ MEDIA

Regular air monitoring of lab and production facilities is an important step to guarantee hygienic conditions during production and to prolong the shelf-life of final products.

CompactDry™ plates are ready-to-use plates for detection of microorganisms in food and dairy products. CompactDry™ plates may also be suitable in the cosmetics, cannabis, water industries and more. They can be used to detect microbial air contamination in combination with the TRIO.BAS™ air sampler.



**Each kit includes:**

- TRIO.BAS MINI air sampler
- Charging cable
- Stainless steel aspirating head
- Protective cover head
- Carrying case
- CompactDry™ plates sold separately

Cat. no.

CompactDry Kit, 100 liters/minute

BAS255K



# ENVIRONMENTAL MONITORING

## PASSIVE AIR SAMPLING

For the most consistent results, Hardy Diagnostics recommends the use of Active Air Sampling with the Trio.BAS line of instruments. For those programs that are interested in settling methods, please see the workflow below.



1. Rehydrate CompactDry™ plate with 1mL sterile diluent.

CompactDry™ TC.....54081



2. Expose plate to air for 15 minutes by removing the lids.



3. Return the lid to the plate. Invert and incubate the plates at specific incubation temperature.

# MEMBRANE FILTRATION



1. Dispense 1mL sterile distilled water onto CompactDry™ plate.

[CompactDry™ TC.....54081](#)

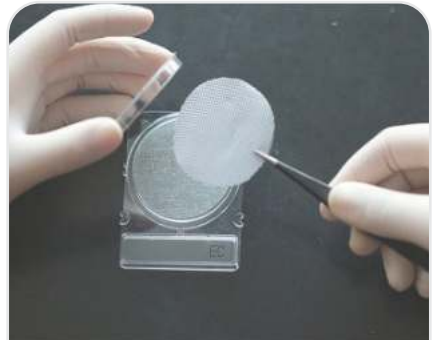


2. Filter sample by filling the sterile chamber with the required amount of liquid sample. Open the vacuum line to start filtration.



3. After filtration, wash the inner surface with 20-30mL sterile distilled water. Repeat 20-30 times.

[Sartorius Microsart.....168M3MS](#)



4. Transfer the filter paper, trapped side up, to the CompactDry™ plate. Ensure that there are no bubbles between the plate and the filter. Incubate the plates at specific incubation temperature.

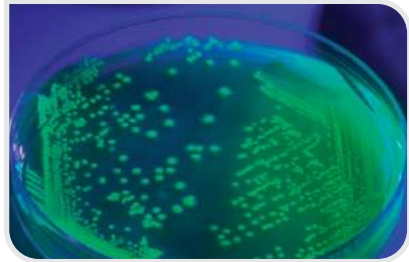


5. Read results and count colonies manually or automatically on the Wizard video reader. Cat. no. CDR1

# CONTROL ORGANISMS

## Microbiologics®

Hardy Diagnostics is proud to work alongside Microbiologics, the leading provider of ready-to-use reference strains for microbiological quality control testing.



### UV-BioTAG

UV-BioTAG™ microorganisms contain a Green Fluorescent Protein (GFP) marker integrated into the chromosome that produces fluorescence of the culture visible under UV light. This allows for easy differentiation of these control strains from contaminants. Available in swab and vial formats,

UV-BioTAG is an easy-to-use solution for quality control in food labs.

- Qualitative product features instant-dissolve pellet to reduce preparation time
- GFP reporter is integrated into the chromosome to provide superior stability
- Assists labs with investigations of positive test results with quick and reliable differentiation of control strains
- Thoroughly tested to ensure authenticity, stability and compatibility with detection technologies

Cat. no.	Description
01227UV-S	<i>Escherichia coli</i> (O157:H7) EC43 derived from FDA ESC1177(STEC)
01227UV-V	<i>Escherichia coli</i> (O157:H7) EC43 derived from FDA ESC1177 (STEC)
01249UVS	<i>Listeria monocytogenes</i> (1/2a) derived from FDA LS808
01249UVV	<i>Listeria monocytogenes</i> (1/2a) derived from FDA LS808
01248UVS	<i>Listeria monocytogenes</i> (1/2b) derived from FDA LS810
01248UVV	<i>Listeria monocytogenes</i> (1/2b) derived from FDA LS810
01250UVS	<i>Listeria monocytogenes</i> (4b) derived from FDA LS806
01250UVV	<i>Listeria monocytogenes</i> (4b) derived from FDA LS806
01226UV-S	<i>Salmonella enterica</i> subsp. enterica serovar Senftenberg Sal59 derived from FDA SAL5697
01226UV-V	<i>Salmonella enterica</i> subsp. enterica serovar Senftenberg Sal59 derived from FDA SAL5697
01223UV-S	<i>Salmonella enterica</i> subsp. enterica serovar Typhimurium Sal54 derived from FDA SAL5694
01223UV-V	<i>Salmonella enterica</i> subsp. enterica serovar Typhimurium Sal54 derived from FDA SAL5694
01224UV-S	<i>Shigella flexneri</i> SF84 derived from FDA SHI0552
01224UV-V	<i>Shigella flexneri</i> SF84 derived from FDA SHI0552



# PIPETTES

Hardy Diagnostics offers plastic, disposable pipettes featuring a one-piece construction. Clear black graduation marks prevent ambiguity and guarantee precise liquid reading.

- Calibration is certified for accuracy (Meets ASTM E934)
- Calibrated to deliver (TD)

## STERILE, INDIVIDUALLY WRAPPED

1ml Pipette, 500/case	1700
2ml Pipette, 500/case	1720
5ml Pipette, 250/case	1740
10ml Pipette, 200/case	1760
25ml Pipette, 100/case	1780

## STERILE, 25 PER PACK

1ml Pipette, 1,000/case	1710
2ml Pipette, 1,000/case	1730
5ml Pipette, 375/case	1750
10ml Pipette, 250/case	1770

## NON-STERILE, 25 PER PACK

1ml Pipette, 1,000/case	1715
2ml Pipette, 1,000/case	1735
5ml Pipette, 375/case	1755
10ml Pipette, 250/case	1775

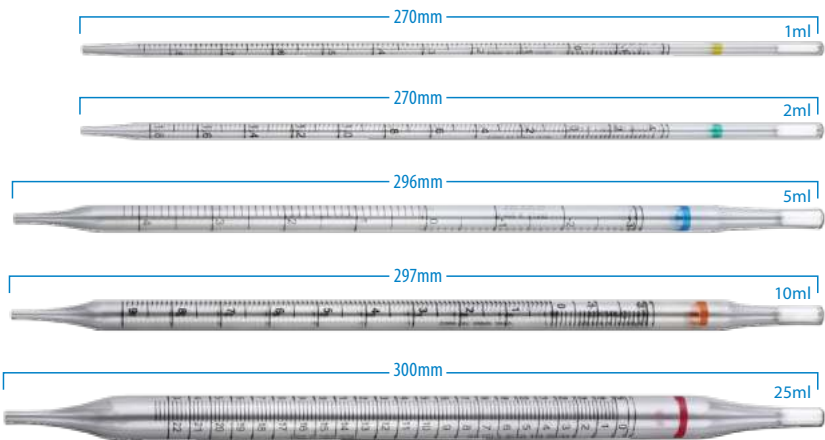


## PORTABLE PIPETTE CONTROLLER

A rechargeable electronic pipetting aid designed for use with glass or plastic serological pipettes in the 0.1 to 100ml volume range.

- Lightweight and ergonomically designed for effortless pipetting.
- Safety valve and replaceable membrane filter provides protection against contamination
- Removable nose cone is autoclavable

Each **3380**



# COMPANION PRODUCTS



This ready-to-use swab and tube is pre-filled with your choice of three sampling diluents. Simply remove the cap, collect your sample by swabbing the surface, recap, and send to the lab. The solution can then be inoculated onto a CompactDry™ plate. Excellent for detection or enumeration of microorganisms from environmental surfaces and hard to reach areas.

EnviroTrans™ Neutralizing Buffer	
2ml, 20/box	SRK20
5ml, 20/box	SRK15
EnviroTrans™ Letheen Broth	
5ml, 20/box	SRK25
EnviroTrans™ Neutralizing Saline	
5ml, 20/box	SRK55



PRE-MOISTENED,  
READY-TO-USE



Swab  
surface.



Pipette 1ml  
to the  
Compact  
Dry™ plate.

## DIGITAL INCUBATOR

Ideal for small laboratories or where space is limited.

- LCD digital temperature display
  - Dimensions: 11.62" (W) x 15.5" (H) x 15.5" (D)
  - Weight: 24 lbs. Electrical: 115 volt/60 Hz
  - Temperature Range: Ambient +10°C to 90°C
- Each

138000



## WHIRL-PAK®

A special gusset creates a flat bottom when the sample is placed in the bag, allowing the bag to stand completely on its own. Easily write with ballpoint pen, pencil, or felt tip marker.



### WRITE-ON/STAND-UP BAGS

4oz, 500/box	<a href="#">B01364WA</a>
18oz, 500/box	<a href="#">B01365WA</a>

### WRITE-ON BAGS (non stand-up)

1oz, 500/box	<a href="#">B01067WA</a>
2oz, 500/box	<a href="#">B01064WA</a>
4oz, 500/box	<a href="#">B01062WA</a>
18oz, 500/box	<a href="#">B01065WA</a>
24oz, 500/box	<a href="#">B01297WA</a>
55oz, 500/box	<a href="#">B01195WA</a>



Hardy Diagnostics has a Quality Management System that is certified to ISO 13485 and is a FDA licensed medical device manufacturer.



#### Headquarters

1430 West McCoy Lane  
Santa Maria, CA 93455  
800.266.2222  
Sales@HardyDiagnostics.com  
HardyDiagnostics.com

#### Distribution Centers

Santa Maria, California  
Olympia, Washington  
Salt Lake City, Utah  
Phoenix, Arizona  
Dallas, Texas  
Springboro, Ohio  
Lake City, Florida  
Albany, New York  
Raleigh, North Carolina

Copyright © 2021 Hardy Diagnostics



# Hardy**CHROM**<sup>TM</sup>



 **HARDY**  
DIAGNOSTICS

## **CHROMOGENIC** **CULTURE MEDIA**

CLINICAL | FOOD | ENVIRONMENTAL

# Table of Contents

<b>2</b>	HardyCHROM™ Bcc
<b>4</b>	HardyCHROM™ BluEcoli™ Biplate
<b>6</b>	HardyCHROM™ Campy
<b>8</b>	HardyCHROM™ Candida
<b>10</b>	HardyCHROM™ Candida + auris
<b>12</b>	HardyCHROM™ CRE
<b>14</b>	HardyCHROM™ ECC
<b>16</b>	HardyCHROM™ ESBL
<b>18</b>	HardyCHROM™ Group A Strep
<b>20</b>	HardyCHROM™ HurBi™ Biplate
<b>22</b>	HardyCHROM™ Listeria
<b>24</b>	HardyCHROM™ MRSA
<b>26</b>	HardyCHROM™ O157
<b>28</b>	HardyCHROM™ Sakazakii
<b>30</b>	HardyCHROM™ Salmonella
<b>32</b>	HardyCHROM™ Staph aureus
<b>34</b>	HardyCHROM™ SS NoPRO™
<b>36</b>	HardyCHROM™ UTI
<b>38</b>	HardyCHROM™ Vibrio

Hardy**CHROM**™

For use in Clinical, Environmental,  
Food, and Veterinary laboratories

**Hardy Diagnostics** was the first company to bring chromogenic media to America in 1996, which originated in Paris, France. Over the years, Hardy developed the largest line of chromogenic media in the US. Hardy's formulas are unique and have been meticulously and painstakingly developed by our R&D microbiologists, who must test hundreds of formulas before discovering the optimal combination of ingredients for the final product. This resulted in a medium that assisted microbiologists in making rapid and accurate identifications based on colony color, thus simplifying the procedures and saving time as well. Try our chromogenic media in your testing program and discover the difference that Hardy's innovative products can make.



# HardyCHROM™ Bcc

15x100mm plate, 10/pk, **Cat. no. G335**

## Intended Use

**HardyCHROM™ Bcc** is for selective isolation and differentiation of *Burkholderia cepacia*, and other closely related species, based on colony color. Growth of *Burkholderia cepacia*, or members of the Bcc group, grow on the media after 2-3 days with formation of pink to purple colonies.

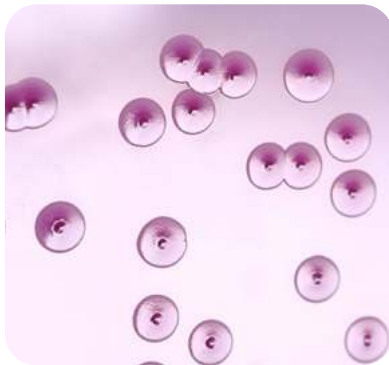




## Color Read-Out Interpretation

HardyCHROM™ Bcc is highly selective for *B. cepacia* and 28 other Bcc strains, including *B. cenocepacia* and *B. multivorans*. HardyCHROM™ Bcc is inhibitory for *P. aeruginosa*.

Growth of *B. cepacia*, or members of the Bcc group, are eventuated by a visible color change after three days of incubation at 30-35°C, with formation of pink to purple colonies.



***B. cepacia***

# HardyCHROM™

## BluEcoli™ Biplate

15x100mm plate, 10/pk, **Cat. no. J123**

BluEcoli™/CNA, 15x100mm plate, 10/pk, **Cat. no. J116**

### Intended Use

**BluEcoli™ Urine Biplate** is a urine culture medium consisting of Blood Agar on one side and BluEcoli™ Agar on the other side, which is used for the isolation of urinary pathogens and for the identification of *Escherichia coli*.

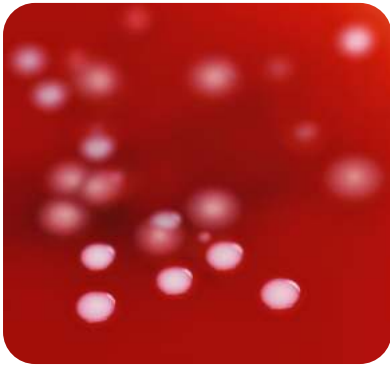
This revolutionary agar plate economically screens urine specimens for *E. coli*. Since 80-90% of all positive urine cultures are *E. coli*, the **BluEcoli™ Urine Biplate** is a fast, easy, and cost effective way of identifying the majority of UTIs.<sup>1</sup> Now you can identify *E. coli* based on colony color with no further testing needed!



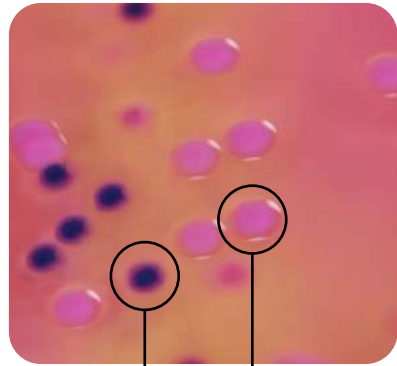
## Color Read-Out Interpretation

Inoculate both sides of this biplate with the urine specimen. If the pathogen is *E. coli*, the colonies on the chromogenic side of the biplate will turn blue.<sup>2</sup>

The blue color is confirmatory! No further confirmation or indole testing is required.<sup>3</sup> With the BluEcoli™ Urine Biplate, you can select a colony from the blood agar side of the biplate for susceptibility testing.



*Staphylococcus aureus*



*Escherichia coli*

*Klebsiella pneumoniae*

<sup>1</sup> Kodaka et al., Journal of Clinical Microbiology, Jan. 1995, p.199-201.

<sup>2</sup> Colonies of the serotype *E. coli* O157, which are not usually associated with urinary tract infections, are an exception, and will not turn blue on the chromogenic side of the BluEcoli™ Urine Biplate.

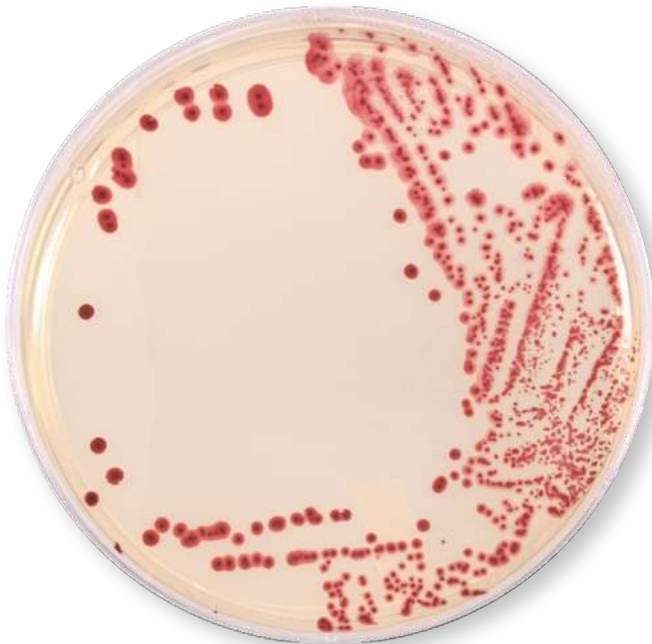
<sup>3</sup> The performance of a spot indole test alone is not an adequate screen for *E. coli*, since there are at least 52 species of gram-negative bacilli that grow on MacConkey, are indole-positive and ferment lactose.

# HardyCHROM™ Campy

15x100mm plate, 10/pk, **Cat. no. G339**

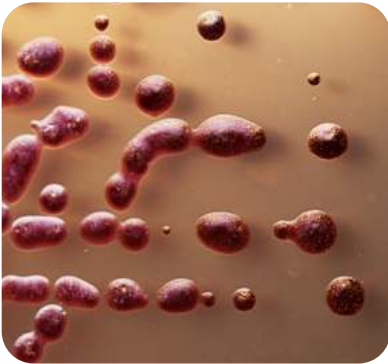
## Intended Use

**HardyCHROM™ Campy** Agar is recommended as a screening medium for the selective isolation and chromogenic differentiation of *Campylobacter* spp. from direct stool cultures or from food or poultry samples. HardyCHROM™ Campy Agar is composed of a highly nutritious basal medium containing vitamins, essential nutrients, salts, and growth factors to help support the growth of *Campylobacter* spp.

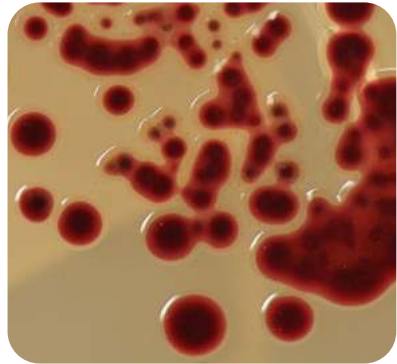


## Color Read-Out Interpretation

- *Campylobacter* forms red colonies on a translucent background, making detection easy.
- Selects for *Campylobacter* species from mixed samples, especially *C. jejuni*, *C. lari*, *C. coli*, and *C. fetus*.



*Campylobacter jejuni*



*Campylobacter coli*

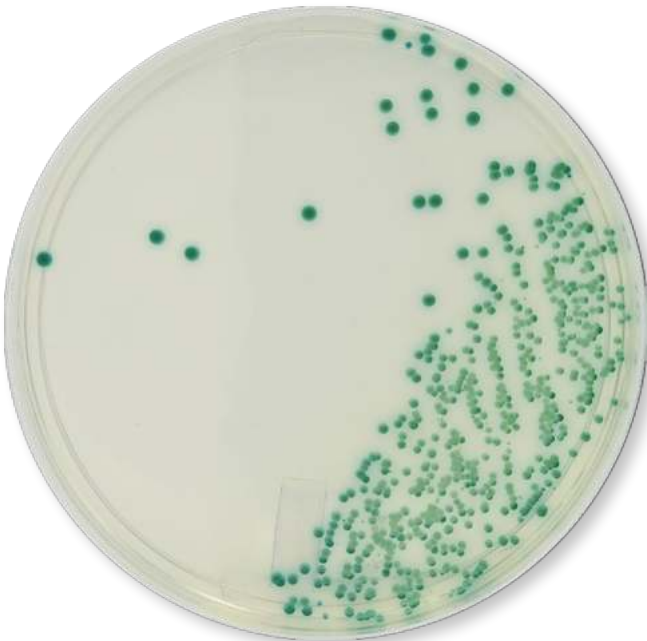
# HardyCHROM™ Candida

15x100mm plate, 10/pk, **Cat. no. G301**

## Intended Use

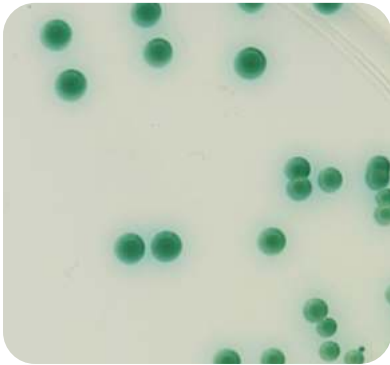
**HardyCHROM™ Candida** utilizes on chromogenic substances to reveal specific enzymes for species identification by color. Due to the unique colors produced, no further testing is needed to identify *C. albicans*, *C. tropicalis*, and *C. krusei*. A trehalose test is needed to confirm *C. glabrata*.

- Helpful in spotting mixed infections.
- Color development occurs within 24 to 48 hours.
- Colors are bright and easy to read out.



# Color Read-Out Interpretation

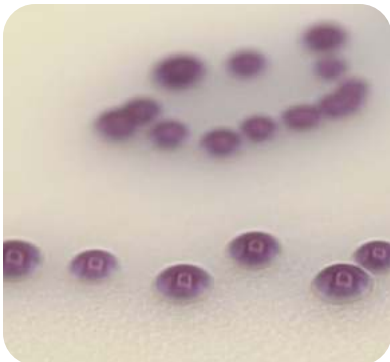
- *C. albicans* produces smooth, medium green to dark metallic green colonies.
- *C. tropicalis* colonies appear medium blue to dark metallic blue with a blue halo.
- *C. glabrata* produces smooth, pink colonies, often with a darker mauve center. Further testing, such as Rapid Trehalose Fermentation Broth (Cat. no. Z205) is needed for confirmation.
- *C. krusei* produces rough, spreading, pink colonies.



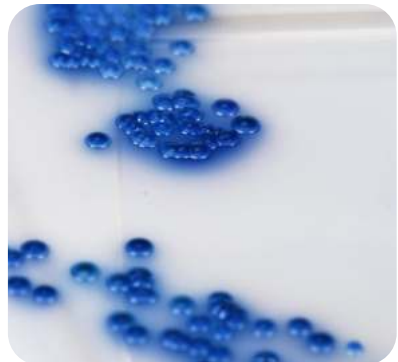
*C. albicans*



*C. krusei*



*C. glabrata*



*C. tropicalis*

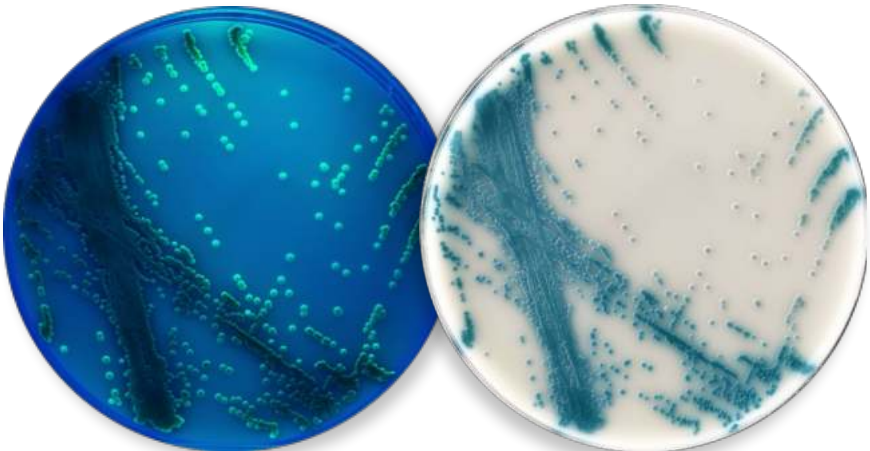
# HardyCHROM™ Candida + auris

15x100mm plate, 10/pk, **Cat. no. G343**

## Intended Use

**HardyCHROM™ Candida + auris** is recommended for the selective isolation and differential identification of *Candida* species. Colonies of *C. auris* will appear white with a characteristic teal to teal-green “bullseye” center and show a unique fluorogenic reaction under UV light at 48-72 hours. *C. auris* is unique amongst other *Candida* species because it causes outbreaks and is resistant to nearly all antifungal drugs. This pathogen is also difficult to identify and thus can be misidentified as other species of yeasts. This medium also allows for the differentiation of *C. tropicalis*, *C. albicans* and *C. krusei*, and can aid in the identification of *C. glabrata* when used in conjunction with Rapid Trehalose Broth or GlabrataQuick™. All colonies suspected of *C. auris* should be subjected to confirmatory methods such as MALDI.

### Unique fluorogenic reaction under UV light!



*Candida auris* under UV light at 48 hours.

*Candida auris* at 48 hours under visible ambient light. Note the white perimeter and teal colored center of the isolated colonies.



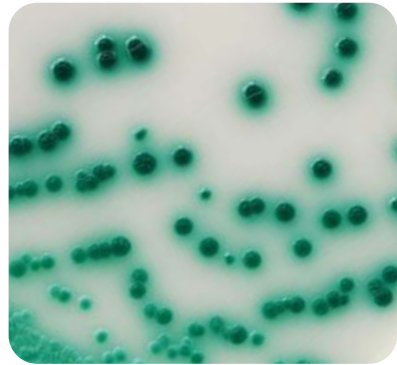
# Color Read-Out Interpretation

This medium also allows for the differentiation of *C. tropicalis*, *C. albicans* and *C. krusei*, and can aid in the identification of *C. glabrata* when used in conjunction with Rapid Trehalose Broth or GlabrataQuick™.

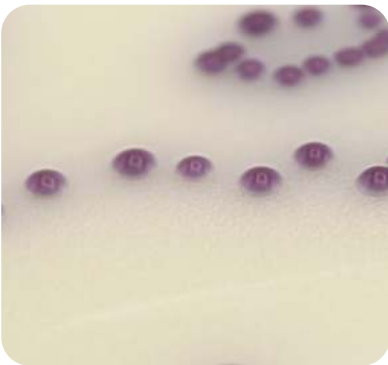
- *C. tropicalis* colonies appear medium blue to dark metallic blue with a blue halo.
- *C. albicans* produces a smooth, medium to green dark metallic green colonies.
- *C. glabrata* produces smooth, pink colonies, often with a darker mauve center.
- *C. krusei* produces rough, spreading, pink colonies.



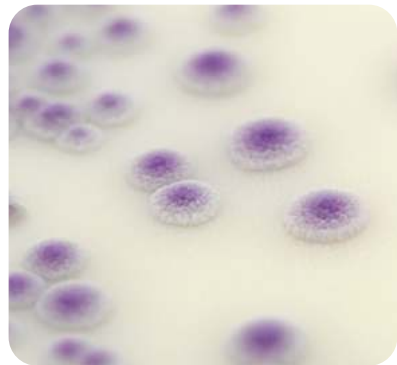
***C. tropicalis***



***C. albicans***



***C. glabrata***



***C. krusei***

# HardyCHROM™ CRE

15x100mm plate, 10/pk, **Cat. no. G323**

## Intended Use

**HardyCHROM™ CRE** is a selective and differential chromogenic agar medium intended for the qualitative and presumptive detection of *Escherichia coli* and KES\* that are non-susceptible to carbapenems from stool specimens.

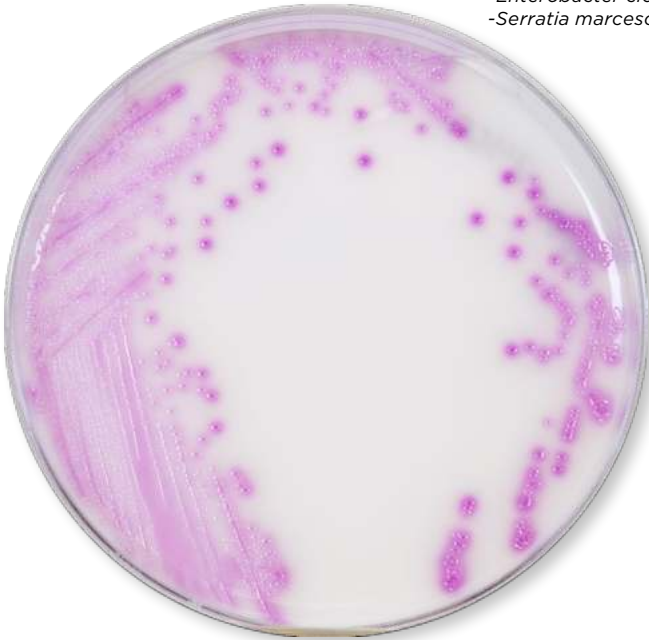
**HardyCHROM™ CRE** is intended as an aid in the detection, identification of colonization and control of these bacteria in a healthcare setting. Results can be interpreted after incubation for 18-24 hours. Subculture to non-selective medium is required for confirming identification, antimicrobial susceptibility testing and epidemiological typing.

### 510(k) cleared.

**HardyCHROM™ CRE** is not intended to diagnose infection or guide therapy.

\*KES =

- Klebsiella aerogenes*
- Klebsiella oxytoca*
- Klebsiella pneumoniae*,
- Enterobacter cloacae* complex
- Serratia marcescens*

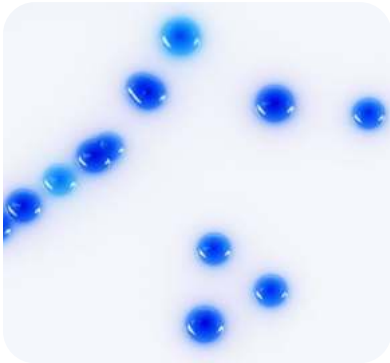


## Color Read-Out Interpretation

KES produce large, dark blue colonies (with or without pink halos) and are presumptive positive for carbapenem non-susceptible KES (*Klebsiella aerogenes*, *Klebsiella oxytoca*, *Klebsiella pneumoniae*, *Enterobacter cloacae* complex, and *Serratia marcescens*).

Non-susceptible *E. coli* produces colonies that are pink to magenta in color.

Colonies that are not pink to magenta, blue, or blue with pink halos are negative. No carbapenem non-susceptible *Escherchia coli* or KES detected.



*Klebsiella pneumoniae*



*Escherichia coli*

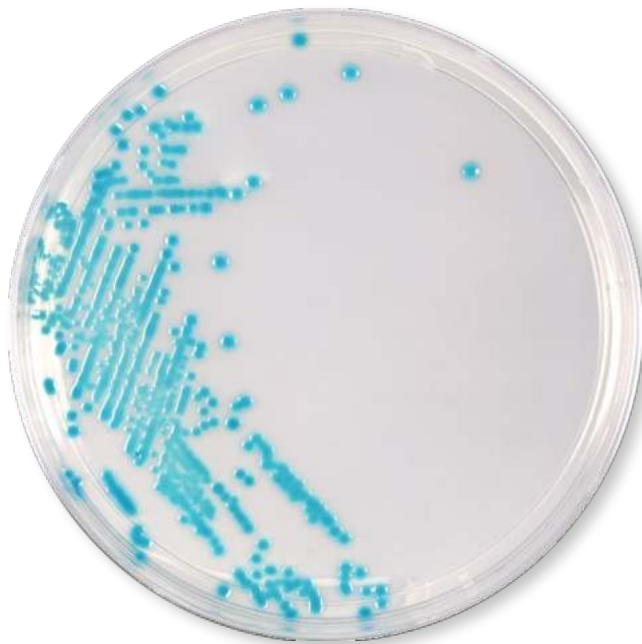
# HardyCHROM™ ECC

15x100mm plate, 10/pk, **Cat. no. G303**

## Intended Use

**HardyCHROM™ ECC** is a chromogenic media recommended for the detection, differentiation, and enumeration of *Escherichia coli* and other coliforms in food, water, or environmental samples based on colony color.

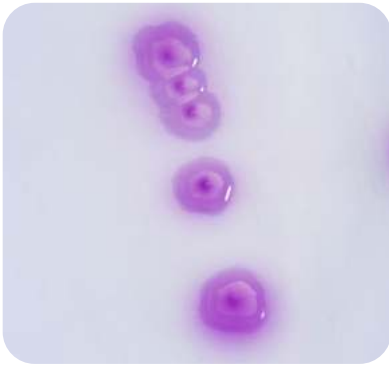
Routine testing to assess the sanitary quality of food and water is directed at the detection and enumeration of indicator microorganisms rather than pathogens. The coliform group of microorganisms is recognized as the principal indicator of unsanitary conditions. Coliform microorganisms are characterized as gram-negative, lactose-fermenting rods. They are present in the intestinal tract of man and other animals, and non-fecal coliforms are found in many areas of the environment, including in soil and on plants.



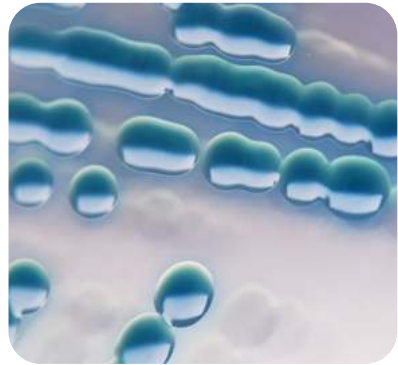
## Color Read-Out Interpretation

*Escherichia coli* colonies growing on HardyCHROM™ ECC (Cat. no. G303). Incubated aerobically for 24 hours at 35°C. Growth; smooth pink to violet colonies.

*Klebsiella pneumoniae* colonies growing on HardyCHROM™ ECC (Cat. no. G303). Incubated aerobically for 24 hours at 35°C. Growth; smooth turquoise colonies.



*Escherichia coli*



*Klebsiella pneumoniae*

# HardyCHROM™ ESBL

15x100mm plate, 10/pk, **Cat. no. G321**

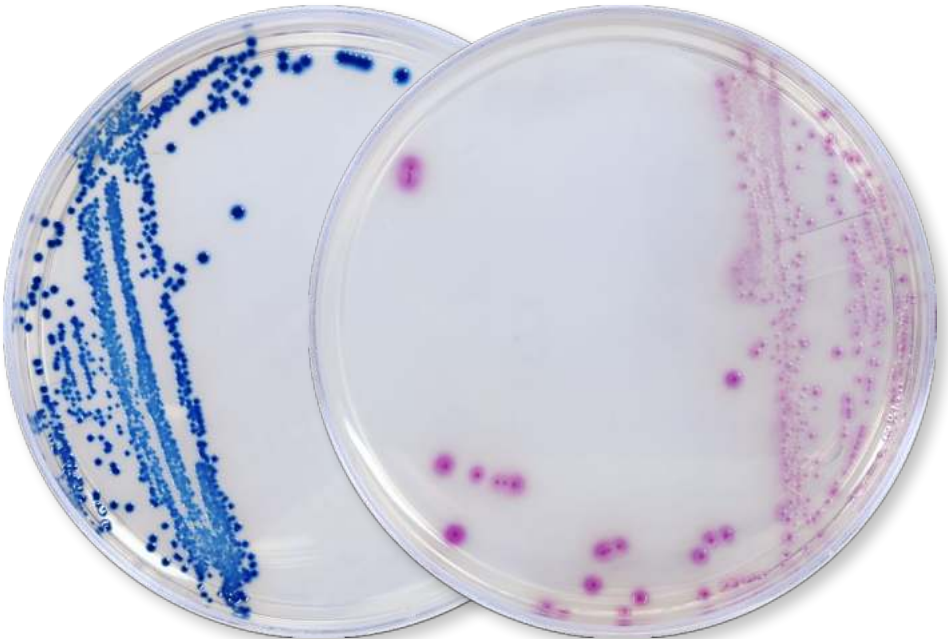
## Intended Use

**HardyCHROM™ ESBL** is a selective and differential chromogenic medium which is intended for the qualitative and presumptive detection from stool specimens of:

- Enterobacteriales that are potentially non-susceptible to ceftazidime and cefpodoxime.
- Extended-spectrum beta-lactamase (ESBL)-producing *Escherichia coli*, *Klebsiella pneumoniae* and *Klebsiella oxytoca*.

Growth can appear as early as 18 hours after inoculation. *Escherichia coli* will produce pink to magenta colonies, *Proteus mirabilis* will produce yellow or gold colonies and *Klebsiella pneumoniae* produce blue to purple colonies with or without a pink halo.

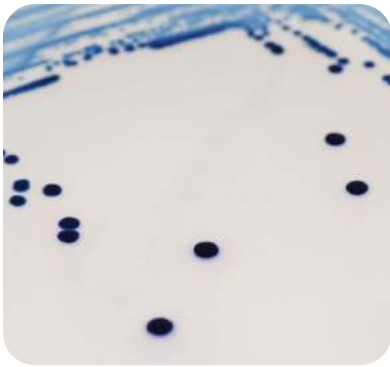
**510(k) cleared.**



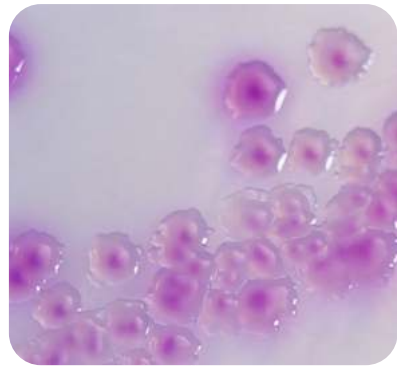
# Color Read-Out Interpretation

ESBL or Extended-Spectrum Beta-Lactamases refer to a group of enzymes produced by some species of bacteria that can mediate the organism's resistance to one or more broad spectrum penicillins and cephalosporin antibiotics.

This breakthrough culture media will help screen for ESBL producers quickly and more efficiently from stool specimens.



*Klebsiella pneumoniae*



*Escherichia coli*

\*HardyCHROM™ ESBL is not intended to diagnose ESBL infection nor to guide or monitor therapy for ESBL infections. Further testing using approved methods is necessary for identification, susceptibility testing, or epidemiological typing.

# HardyCHROM™ Group A Strep

15x100mm plate, 10/pk, **Cat. no. G337**

## Intended Use

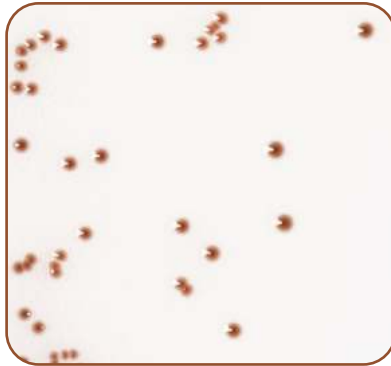
This easy to read chromogenic medium is recommended for the selective cultivation and differential isolation of Group A *Streptococcus* (*S. pyogenes*). Colonies are identified based on color (red, red-brown, or red-orange colonies) among the other non-GAS bacteria in the complex throat flora (blue, clear or white colonies) after 24 hours of incubation.





# Color Read-Out Interpretation

*Streptococcus pyogenes* red-brown colonies growing on **HardyCHROM™ Group A Strep** agar (Cat. no. G337). Incubated in CO<sub>2</sub> for 24 hours at 35°C.



*Streptococcus pyogenes*

*Streptococcus pyogenes* (clinical strain) red-orange colonies growing on **HardyCHROM™ Group A Strep** agar (Cat. no. G337). Incubated in CO<sub>2</sub> for 24 hours at 35°C.



*Streptococcus pyogenes* (clinical strain)

# HardyCHROM™ HurBi™ Biplate

15x100mm plate, 10/pk, **Cat. no. J100**

## Intended Use

**HardyCHROM™ HURBi™ Biplate** is a selective chromogenic medium recommended for the cultivation, differentiation and enumeration of various gram-negative and gram-positive bacteria, and yeast based on colony color and morphology. This biplate reduces the need for expensive automated ID cards.



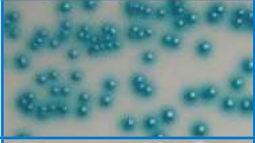






Selective agents have been added to the each side of the biplate to select for growth of gram-positive organisms and yeast on one side and to select for growth of gram-negative organisms on the other side of the biplate. Distinct color reactions for each of the common urinary tract pathogens make it easier to detect mixed infections.



*Escherichia coli*

*Enterococcus faecalis*

# Color Read-Out Interpretation

<i>Staphylococcus aureus</i>	Opaque, cream to white colored colonies	
<i>Staphylococcus saprophyticus</i>	Opaque, pink colonies	
<i>Enterococcus</i> spp.	Teal to turquoise colonies	
<i>Candida albicans</i> , <i>Candida krusei</i> , <i>Candida tropicalis</i> , and <i>Candida glabrata</i>	Small, opaque, white, moist colonies ( <i>C. krusei</i> will be a rough colony)	
<i>E. coli</i>	Rose to magenta colonies with darker pink centers	
<i>Klebsiella</i> , <i>Enterobacter</i> , and <i>Serratia</i> spp.	Deep blue or dark indigo colonies	
<i>Citrobacter</i> spp.	Dark blue colonies often with a rose halo in the surrounding media	
<i>Proteus</i> , <i>Morganella</i> , and <i>Providencia</i> spp.	Clear to light yellow colonies with golden-orange halo in the surrounding media (some <i>Proteus vulgaris</i> colonies will be blue-green)	
<i>Pseudomonas</i> spp.	Colorless to light yellow-green colonies	

# HardyCHROM™ Listeria

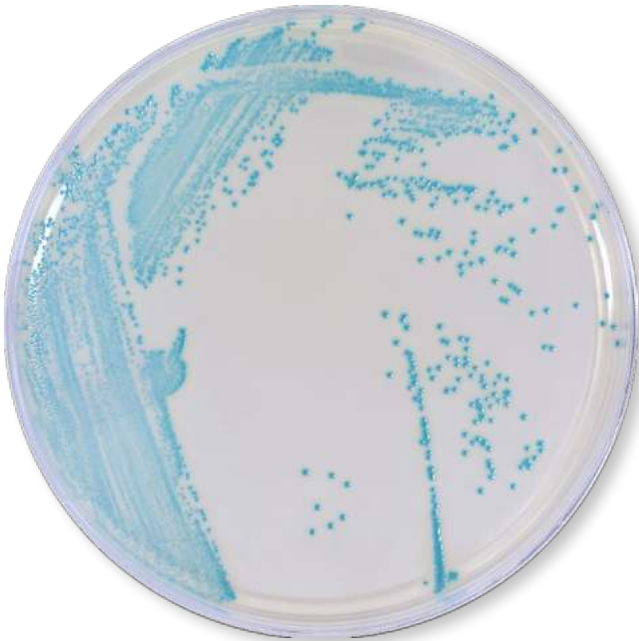
15x100mm plate, 10/pk, **Cat. no. G317**

## Intended Use

**HardyCHROM™ Listeria** is a chromogenic medium recommended for the selective isolation, differentiation, and enumeration of *Listeria monocytogenes* from food and environmental samples by colony color and appearance. *L. monocytogenes* colonies will turn turquoise with a distinctive white halo.

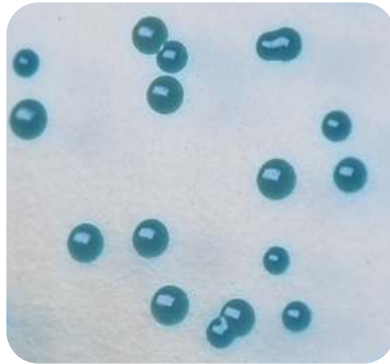
## Features

- Modified and improved ALOA formula.
- Differentiates *L. monocytogenes* and *L. ivanovii* from other *Listeria* species.
- *L. monocytogenes* colonies turn turquoise with a white halo for easy read-out.
- Results as early as 24 hours.



## Color Read-Out Interpretation

The presence of smooth, round, turquoise colonies 1-1.5mm in diameter surrounded by an opaque white halo is a presumptive positive test for the presence of *L. monocytogenes*/*L. ivanovii*. Further testing should be done to differentiate *L. monocytogenes* from *L. ivanovii* such as hemolysis, CAMP, rhamnase, xylose or other AOAC-RI approved methods. Colonies which appear colorless or turquoise without halos should be interpreted as negative for *L. monocytogenes*/*L. ivanovii*.



*Listeria monocytogenes*

# HardyCHROM™ MRSA

15x100mm plate, 10/pk, **Cat. no. G307**

Reduced stacking ring, for use in automated sample processing systems. 15x100mm plate, 10/pk, **Cat. no. GA307**

## Intended Use

**HardyCHROM™ MRSA** is a selective and differential chromogenic medium that facilitates the isolation and identification of methicillin-resistant *Staphylococcus aureus* (MRSA) to aid in the prevention and control of MRSA infections in health care settings. The test is performed on anterior nares swabs from patients and healthcare workers to screen for MRSA colonization.

- Distinct color change
- Bright color development
- Compatible with automation
- Read-out at 24 hours

**510(k) cleared.**



# Color Read-Out Interpretation

This chromogenic medium simplifies the detection of MRSA. MRSA produce pink to magenta colonies. Color development is bright, distinct and easy-to-read.

Methicillin-resistant *Staphylococcus aureus* colonies grown aerobically within 24 hours.



***Staphylococcus aureus***

Contact Plate (for environmental screening),  
15x60mm, 10/pk **Cat. no. P14**

HardyCHROM MRSA/HardyCHROM Staph aureus Biplate,  
15x100mm, 10/pk, **Cat. no. J35**

\*HardyCHROM™ MRSA is not intended to diagnose MRSA infection nor to guide or monitor therapy for MRSA infections. Further testing using approved methods is necessary for susceptibility testing or epidemiological typing.

# HardyCHROM™ O157

15x100mm plate, 10/pk, **Cat. no. G305**

## Intended Use

**HardyCHROM™ O157** is a selective and differential medium recommended for the isolation of enterohemorrhagic *E. coli* O157 from food and environmental sources. Chromogenic substances in the media facilitate detection by colony color.





## Color Read-Out Interpretation

*E. coli* O157 produce purple-pink colored colonies on the plate. Organisms other than *E. coli* O157 will be inhibited, or appear as blue colonies.



*Escherichia coli*

# HardyCHROM™

## Sakazakii

15x100mm plate, 10/pk, **Cat. no. G315**

### Intended Use

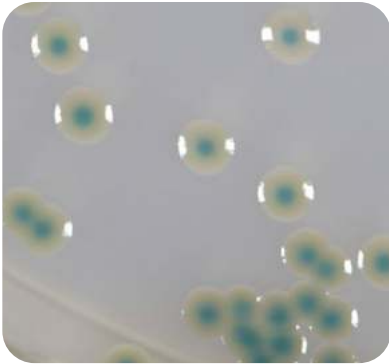
**HardyCHROM™ Sakazakii** is a chromogenic medium recommended for the selective isolation and differentiation of *Cronobacter (Enterobacter) sakazakii* from other members of the Enterobacterales family based on colony color.

*C. sakazakii* is a gram-negative, rod-shaped opportunistic pathogen that is associated with a rare but life-threatening form of meningitis and necrotizing enterocolitis in neonates. The source of infection has been linked to the ingestion of powdered milk-based infant formula intrinsically contaminated by *C. sakazakii*. The organism is both thermotolerant and resistant to desiccation, which enables it to survive manufacturing processes.



## Color Read-Out Interpretation

- *C. sakazakii* produces smooth, blue-green colonies on **HardyCHROM™ Sakazakii** as a result of unique bacterial enzyme interactions with chromogenic substances.
- Other members of the family Enterobacterales will produce white or colorless colonies with or without black centers.
- All gram-positive bacteria and yeast will be inhibited on this medium.



*C. sakazakii*



*Salmonella spp.*

# HardyCHROM™

## Salmonella

15x100mm plate, 10/pk, **Cat. no. G309**

### Intended Use

**HardyCHROM™ Salmonella** is a differential medium that facilitates the isolation and differentiation of *Salmonella* spp. from other members of the Enterobacteriales.

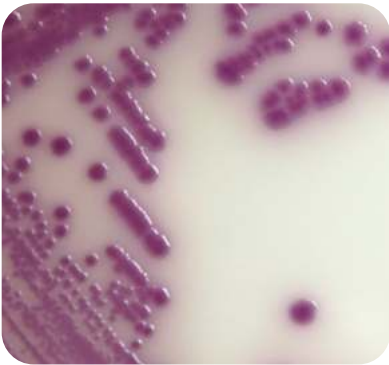
This medium utilizes the ability of *Salmonella* spp. to produce acid from propylene glycol. This characteristic is used in conjunction with a chromogenic indicator to differentiate *Salmonella* spp. from *Proteus* spp. and other Enterobacteriales.

*Salmonella* spp., including *S. Typhi* and *S. Paratyphi A*, produce pink to magenta colonies. Members of the Enterobacteriales produce blue, blue-green, white, or colorless colonies, while Gram-positive bacteria and non-glucose fermenting bacteria will be inhibited.

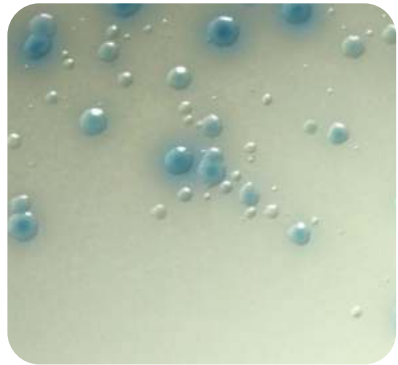


## Color Read-Out Interpretation

*Salmonella* spp., including *S. Typhi* and *S. Paratyphi A*, produce magenta colored colonies. Other members of the Enterobacterales (if present) produce blue, blue-green, white, or colorless colonies. Gram-positive bacteria and non-glucose fermenting bacteria will be inhibited.



*Salmonella enterica*



*Escherichia coli*

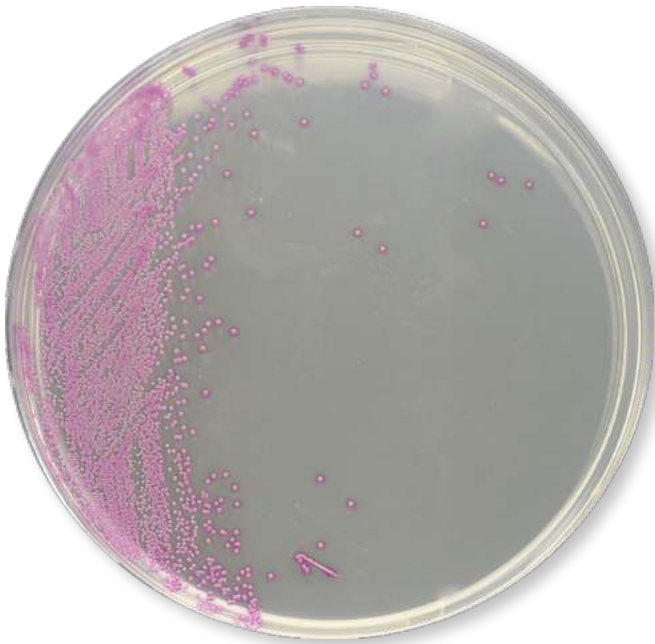
# HardyCHROM™ Staph aureus

15x100mm plate, 10/pk, **Cat. no. G311**

## Intended Use

**HardyCHROM™ Staph aureus** allows for the rapid and reliable detection of *Staphylococcus aureus*. This medium contains a special chromogenic mix that allows for the isolation and differentiation of *Staphylococcus* spp.

*Staphylococcus aureus* has been implicated in nosocomial infections and food poisoning outbreaks. Many *S. aureus* strains produce enterotoxins that cause food poisoning when ingested. Food poisoning, bacteremia, pneumonia, toxic shock syndrome, and meningitis are some of the more serious infections that can be caused by *S. aureus*.



## Color Read-Out Interpretation

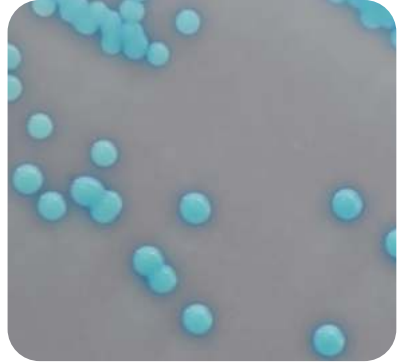
*Staphylococcus aureus* can be identified as smooth, deep pink to fuchsia colored colonies on the plate.

Other organisms may appear as colorless, blue, turquoise, or cream colonies, or will be inhibited. *Staphylococcus epidermidis* will be partially to completely inhibited.

*Staphylococcus saprophyticus* will appear as turquoise colored colonies. Some gram-positive organisms other than *S. aureus* may appear as blue colonies.



***Staphylococcus aureus***



***Staphylococcus saprophyticus***

# HardyCHROM™ SS NoPRO™

15x100mm plate, 10/pk, **Cat. no. G327**

## Intended Use

**HardyCHROM™ SS NoPRO** (no-*Proteus*) agar is recommended for the selective isolation and differentiation of *Salmonella* and *Shigella* spp. from stool. **HardyCHROM™ SS NoPRO** agar is intended as a primary screening tool to distinguish *Salmonella* and *Shigella* spp. from non-pathogenic enteric bacteria based on colony color, while inhibiting the growth and characteristic swarming of *Proteus* spp. The patented enhanced inhibition of *Proteus* reduces the expense involved in working up non-pathogens that could mimic enteric pathogens. Further species confirmation of suspect colonies via conventional or automated methods is recommended. This chromogenic medium for *Salmonella* and *Shigella* is both sensitive and specific without needless work-ups for no-*Proteus*.









# Color Read-Out Interpretation

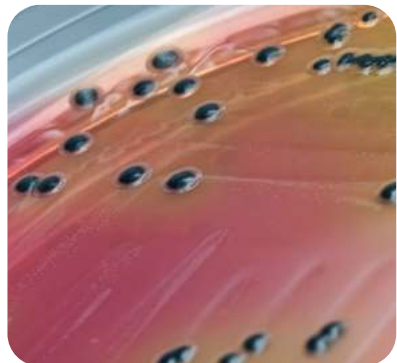
Most *Salmonella* serovar will produce H<sub>2</sub>S and the colonies will have a large black center with clear perimeter. *Salmonella* that do not produce H<sub>2</sub>S and *Shigella* spp. produce teal blue colored colonies.

*S. dysenteriae* may produce small, colorless colonies. Further species confirmation of suspect colonies via conventional or automated method is recommended. Teal color development may not be apparent at 18 hours of incubation in rare instances. Plates should be incubated a full 24 hours before being discarded as negative. Other members of the Enterobacterales, if present, will produce:

H <sub>2</sub> S producing <i>Salmonella</i> spp.	Colonies with large black centers with clear perimeter	
<i>Shigella</i> spp. and non-H <sub>2</sub> S producing <i>Salmonella</i> spp.	Teal blue colored colonies	
<i>Escherichia</i> spp., <i>Klebsiella</i> spp., <i>Citrobacter</i> spp., <i>Yersinia</i> spp., <i>Enterobacter</i> spp.	Pink colonies, with or without purple centers	
<i>Hafnia alvei</i> and inactive <i>E. coli</i> (Alkaescens - Dispar)	Small, blue colonies	



*S. sonnei*



*Salmonella*

# HardyCHROM™ UTI

15x100mm plate, 10/pk, **Cat. no. G313**

## Intended Use

**HardyCHROM™ UTI** is a chromogenic culture medium that facilitates the isolation and differentiation of urinary tract pathogens. The development of various colors, due to chromogenic substances in the medium, allows for the differentiation of multiple microorganisms from the primary set-up of a urine specimen.

There are a number of organisms routinely isolated from urinary tract infections (UTI). Most UTIs are caused by *Escherichia coli* alone, or in combination with other organisms. The most frequently isolated species produce characteristic enzymes. Thus, **HardyCHROM™ UTI** can be used for the cultivation and differentiation of various groups of organisms with only a minimum number of confirmatory tests.

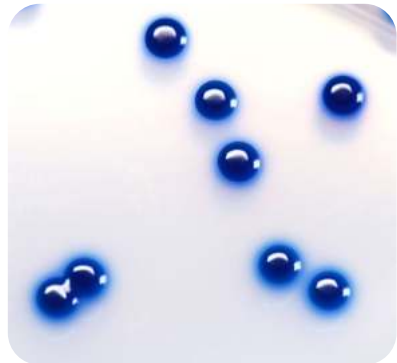


# Color Read-Out Interpretation

- *E. coli* produces large magenta colonies (confirmatory, no further testing required).
- *Enterococcus* spp. produces small, turquoise-colored colonies. No further testing is needed.
- *Pseudomonas* spp. produce colorless to light yellow/green, translucent colonies.
- *Klebsiella*, *Enterobacter*, and *Serratia* spp. produce large, deep blue colonies.
- *Staphylococcus saprophyticus* produces opaque, pink colonies.
- *Candida* spp. produces small, white colonies.
- *Proteus*, *Morganella*, and *Providencia* spp. produce clear to light yellow colonies with a diffuse golden-orange halo in the medium.
- *Staphylococcus aureus* produces opaque, white-colored colonies.
- *Citrobacter* spp. produce dark blue colonies, often with a rose halo in the surrounding media.



*Pseudomonas aeruginosa*



*Klebsiella pneumoniae*

# HardyCHROM™ Vibrio

15x100mm plate, 10/pk, **Cat. no. G319**

## Intended Use

**HardyCHROM™ Vibrio** is recommended for use as a selective and differential growth medium for the cultivation, isolation, and differentiation of *Vibrio* spp. from food and environmental samples.

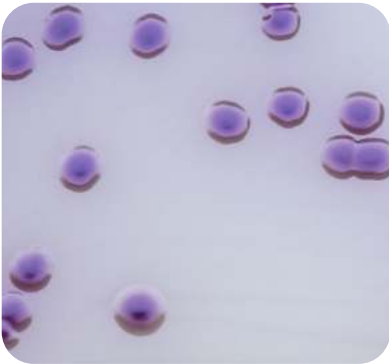
**HardyCHROM™ Vibrio** differentiates *V. cholerae*, *V. parahaemolyticus*, and *V. vulnificus* from other *Vibrio* species based on colony color and fluorescence.

The shellfish pathogen *V. parahaemolyticus* is differentiated from other species such as *V. alginolyticus* by its teal coloration. The deadly pathogens, *V. cholerae* and *V. vulnificus*, are differentiated from other species by their magenta coloration, and from each other by the fluorescence of *V. vulnificus* under UV light.



# Color Read-Out Interpretation

*Vibrio parahaemolyticus* produces colonies that are turquoise. *Vibrio cholerae* produces colonies that are magenta to purple and do not fluoresce under UV light (365nm). *Vibrio vulnificus* produces colonies that are magenta and do fluoresce under UV light (365nm). *Vibrio alginolyticus* and other *Vibrio* spp. produce colonies that are colorless to olive. *Enterococcus faecalis* may grow on HardyCHROM™ Vibrio, but colonies appear sky blue.



***Vibrio cholerae***



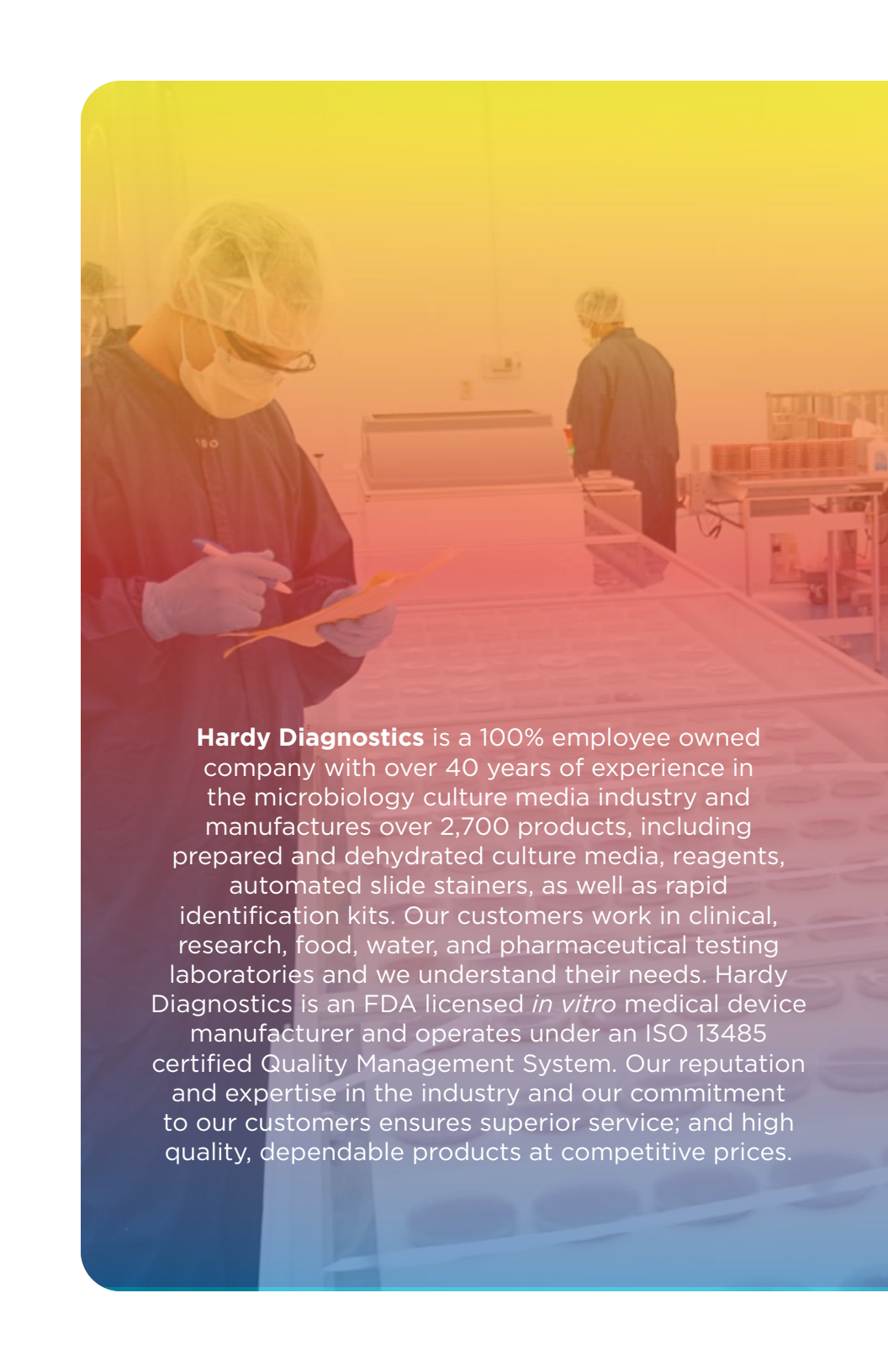
***Vibrio vulnificus***



***Vibrio parahaemolyticus***




***Vibrio alginolyticus***



**Hardy Diagnostics** is a 100% employee owned company with over 40 years of experience in the microbiology culture media industry and manufactures over 2,700 products, including prepared and dehydrated culture media, reagents, automated slide stainers, as well as rapid identification kits. Our customers work in clinical, research, food, water, and pharmaceutical testing laboratories and we understand their needs. Hardy Diagnostics is an FDA licensed *in vitro* medical device manufacturer and operates under an ISO 13485 certified Quality Management System. Our reputation and expertise in the industry and our commitment to our customers ensures superior service; and high quality, dependable products at competitive prices.



A laboratory technician wearing a white lab coat, a white hairnet, safety glasses, and a white face mask is holding a petri dish with a yellowish-orange agar culture. The technician is standing in a biosafety cabinet, which is filled with several other petri dishes on a tray. The background shows a laboratory setting with shelves and equipment. The image has a color gradient overlay, transitioning from yellow at the top to blue at the bottom.

**Hardy Diagnostics** is happy to support any of your custom needs. For proprietary formulations, we offer nondisclosure agreements (NDA) to ensure confidentiality. If you are searching for a custom media manufacturer in a FDA compliant and ISO certified facility, please contact us at [CustomerSuccess@HardyDiagnostics.com](mailto:CustomerSuccess@HardyDiagnostics.com)

Hardy**CHROM**<sup>TM</sup>

# Hardy **CHROM**™



**100%**  
Employee Owned

ESTABLISHED  
**1980**



Hardy Diagnostics  
donates 1% of each  
sale to charity.



FM 572526

Hardy Diagnostics has a Quality Management System that is certified to ISO 13485 and is a FDA licensed medical device manufacturer.

**MADE IN USA**

#### Headquarters

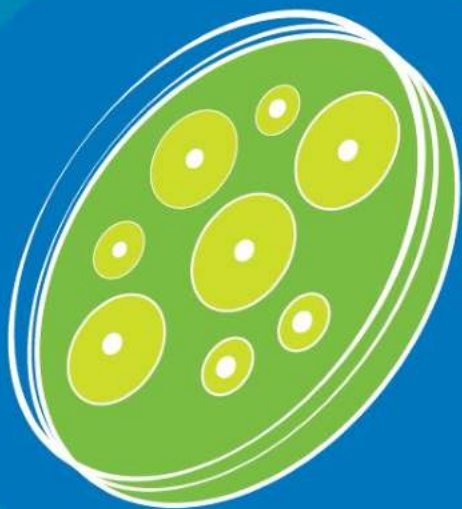
1430 West McCoy Lane  
Santa Maria, CA 93455  
800.266.2222  
Sales@HardyDiagnostics.com  
HardyDiagnostics.com

#### Distribution Centers

Santa Maria, California  
Olympia, Washington  
Salt Lake City, Utah  
Phoenix, Arizona  
Dallas, Texas  
Springboro, Ohio  
Lake City, Florida  
Albany, New York  
Raleigh, North Carolina



# SUSCEPTIBILITY TESTING





# Table of Contents

HardyDisk™ AST .....	1
HardyDisk™ ID .....	8
BBL™ SensiDisk .....	9
Culture Media for AST .....	11
Accessory Products .....	12



Years of  
Bringing You  
A Culture of Service



100%  
Employee Owned



## Headquarters

1430 West McCoy Lane  
Santa Maria, CA 93455  
800.266.2222 : phone  
Sales@HardyDiagnostics.com  
HardyDiagnostics.com

## Distribution Centers

Santa Maria, California  
Olympia, Washington  
Salt Lake City, Utah  
Phoenix, Arizona  
Dallas, Texas  
Springboro, Ohio  
Lake City, Florida  
Albany, New York  
Raleigh, North Carolina



FM 572526

Hardy Diagnostics has a Quality Management System that is certified to ISO 13485 and is a FDA licensed medical device manufacturer.

# HardyDisk™ AST

Now you have a competitive choice!

Hardy Diagnostics offers an extensive selection of antibiotics sensitivity disks for the Kirby-Bauer disk diffusion test.



## Features & Benefits

- A complete line of all commonly used antibiotics.
- Spring loaded in cartridges of 50 disks for smooth and reliable dispensing.
- Available in single cartridges or packs of five.
- Compatible with the BBL.Sensi-Disc™ dispensers (6, 8, or 12-place).
- Can also be used with the metal single disk dispenser, Cat. no. 260457.
- Improved to prevent jamming and tearing.
- The last disk is marked so you know in advance when to insert a new cartridge.



## INNOVATIVE PACKAGING

HardyDisk™ AST cartridges are packaged in a new canister that features a desiccant built into the lid.

## MUELLER HINTON AGAR (MH1 + G45)

For antimicrobial susceptibility testing (AST) of non-fastidious bacteria by utilizing disk diffusion sensitivity method (Kirby-Bauer). Polystyrene Petri plates feature raised rings for stacking ability and prevents sliding.



## LAST DISK RECOGNITION

The last disk in each cartridge is clearly marked with darklines around its edge. This signifies the end of the cartridge, and gives you advance notice on when to refill with a new one. Spring-loaded in cartridges of 50 disks for smooth and reliable dispensing.

## COMPATIBILITY

The HardyDisk™ AST cartridges are compatible with the BBL™ single or multiple disk dispensers. Each cartridge contains 50 disks that are spring-loaded for smooth and reliable dispensing.



Product	Code	Unit of Measure	Cat. no.
Amikacin	AN-30	30µg, 50 disks/cartridge, 1 cartridge/canister	Z8011
		30µg, 50 disks/cartridge, 5 cartridges/canister	Z8015
Amoxicillin/ Clavulanic Acid	AmC-30	20µg/10µg, 50 disks/cartridge, 1 cartridge/canister	Z8021
		20µg/10µg, 50 disks/cartridge, 5 cartridges/canister	Z8025
Ampicillin/ Sulbactam	SAM-20	10µg/10µg, 50 disks/cartridge, 1 cartridge/canister	Z8041
		10µg/10µg, 50 disks/cartridge, 5 cartridges/canister	Z8045
Ampicillin	AM-10	10µg, 50 disks/cartridge, 1 cartridge/canister	Z8031
		10µg, 50 disks/cartridge, 5 cartridges/canister	Z8035
Azithromycin	AZM-15	15µg, 50 disks/cartridge, 1 cartridge/canister	Z8051
Bacitracin	B-10	10µg, 50 disks/cartridge, 1 cartridge/canister	Z9271
Carbenicillin	CB-100	100µg, 50 disks/cartridge, 5 cartridges/canister	Z8115
Cefaclor	CEC-30	30µg, 50 disks/cartridge, 1 cartridge/canister	Z8121
Cefazolin	CZ-30	30µg, 50 disks/cartridge, 5 cartridges/canister	Z8145
Cefiderocol	FDC-30	30µg, 50 disks/cartridge, 1 cartridge/canister	Z9431
		30µg, 50 disks/cartridge, 5 cartridges/canister	Z9435
Cefotaxime	CTX-30	30µg, 50 disks/cartridge, 1 cartridge/canister	Z8221
		30µg, 50 disks/cartridge, 5 cartridges/canister	Z8225
Cefotetan	CTT-30	30µg, 50 disks/cartridge, 5 cartridges/canister	Z8235

<b>Product</b>	<b>Code</b>	<b>Unit of Measure</b>	<b>Cat. no.</b>
Cefoxitin	FOX-30	30µg, 50 disks/cartridge, 1 cartridge/canister	Z8241
		30µg, 50 disks/cartridge, 5 cartridges/canister	Z8245
Ceftaroline	CPT-30	30µg, 50 disks/cartridge, 1 cartridge/canister	Z9391
		30µg, 50 disks/cartridge, 5 cartridges/canister	Z9395
Ceftazidime	CAZ-30	30µg, 50 disks/cartridge, 1 cartridge/canister	Z8271
		30µg, 50 disks/cartridge, 5 cartridges/canister	Z8275
Ceftazidime/ Avibactam	CZA-50	30/20µg, 50 disks/cartridge, 1 cartridges/canister	Z9351
		30/20µg, 50 disks/cartridge, 5 cartridges/canister	Z9355
Ceftolozane/ Tazobactam	C/T-40	30/10µg, 50 disks/cartridge, 1 cartridges/canister	Z9341
		30/10µg, 50 disks/cartridge, 5 cartridges/canister	Z9345
Ceftriaxone	CRO-30	30µg, 50 disks/cartridge, 1 cartridge/canister	Z8311
		30µg, 50 disks/cartridge, 5 cartridges/canister	Z8315
Cefuroxime	CXM-30	30µg, 50 disks/cartridge, 1 cartridge/canister	Z8321
		30µg, 50 disks/cartridge, 5 cartridges/canister	Z8325
Cephalothin	CF-30	30µg, 50 disks/cartridge, 1 cartridge/canister	Z8331
		30µg, 50 disks/cartridge, 5 cartridges/canister	Z8335
Chloramphenicol	C-30	30µg, 50 disks/cartridge, 1 cartridge/canister	Z8341
		30µg, 50 disks/cartridge, 5 cartridges/canister	Z8345
Cinoxacin	CIN-100	100µg, 50 disks/cartridge, 5 cartridges/canister	Z8355

<b>Product</b>	<b>Code</b>	<b>Unit of Measure</b>	<b>Cat. no.</b>
Ciprofloxacin	CIP-5	5µg, 50 disks/cartridge, 1 cartridge/canister	Z8361
		5µg, 50 disks/cartridge, 5 cartridges/canister	Z8365
Clarithromycin	CLR-15	15µg, 50 disks/cartridge, 1 cartridge/canister	Z8371
Clindamycin	CC-2	2µg, 50 disks/cartridge, 1 cartridge/canister	Z8391
		2µg, 50 disks/cartridge, 5 cartridges/canister	Z8395
Colistin Sulfate	CT	10µg, 50 disks/cartridge, 1 cartridge/canister	Z8411
Delafloxacin	DLX-5	5µg, 50 disks/cartridge, 1 cartridge/canister	Z9301
		5µg, 50 disks/cartridge, 5 cartridges/canister	Z9305
Doripenem	DOR-10	30µg, 50 disks/cartridge, 1 cartridge/canister	Z9371
Doxycycline	D-30	30µg, 50 disks/cartridge, 5 cartridges/canister	Z8445
Eravacycline	ERV-20	20µg, 50 disks/cartridge, 1 cartridge/canister	Z9401
		20µg, 50 disks/cartridge, 5 cartridges/canister	Z9405
Erythromycin	E-15	15µg, 50 disks/cartridge, 1 cartridge/canister	Z8471
		15µg, 50 disks/cartridge, 5 cartridges/canister	Z8475
Gentamicin	GM-10	10µg, 50 disks/cartridge, 1 cartridge/canister	Z8541
		10µg, 50 disks/cartridge, 5 cartridges/canister	Z8545
Imipenem	IPM-10	10µg, 50 disks/cartridge, 5 cartridges/canister	Z8575
Imipenem/ Relebactam	IMR-10/25	10/25µg, 50 disks/cartridge, 1 cartridge/canister	Z9441
		10/25µg, 50 disks/cartridge, 5 cartridges/canister	Z9445
Kanamycin	K-30	30µg, 50 disks/cartridge, 5 cartridges/canister	Z8605

<b>Product</b>	<b>Code</b>	<b>Unit of Measure</b>	<b>Cat. no.</b>
Lefamulin	LMU-20	20µg, 50 disks/cartridge, 1 cartridge/canister	Z9451
		20µg, 50 disks/cartridge, 5 cartridges/canister	Z9455
Levofloxacin	LVX-5	5µg, 50 disks/cartridge, 1 cartridge/canister	Z8611
		5µg, 50 disks/cartridge, 5 cartridges/canister	Z8615
Meropenem/ Vaborbactam	MEV-30	20µg/10µg, 50 disks/ cartridge, 1 cartridge/canister	Z9321
		20µg/10µg, 50 disks/ cartridge, 5 cartridges/canister	Z9325
Nalidixic Acid	NA-30	30µg, 50 disks/cartridge, 5 cartridges/canister	Z8735
Nitrofurantoin	Fm-300	300µg, 50 disks/cartridge, 1 cartridge/canister	Z8791
		300µg, 50 disks/cartridge, 5 cartridges/canister	Z8795
Norfloxacin	NOR-10	10µg, 50 disks/cartridge, 5 cartridges/canister	Z8815
Novobiocin	NB-30	30µg, 50 disks/cartridge, 5 cartridges/canister	Z8835
Ofloxacin	OFX-5	5µg, 50 disks/cartridge, 1 cartridge/canister	Z8841
Omadacycline	OMC-30	30µg, 50 disks/cartridge, 1 cartridge/canister	Z9411
		30µg, 50 disks/cartridge, 5 cartridges/canister	Z9415
Oxacillin	OX-1	1µg, 50 disks/cartridge, 1 cartridge/canister	Z8851
		1µg, 50 disks/cartridge, 5 cartridges/canister	Z8855
Penicillin	P-10	10µg, 50 disks/cartridge, 1 cartridge/canister	Z8881
		10µg, 50 disks/cartridge, 5 cartridges/canister	Z8885
Piperacillin	PIP-100	100µg, 50 disks/cartridge, 5 cartridges/canister	Z8905
Piperacillin/ Tazobactam	TZP-110	100µg/10µg, 50 disks/ cartridge, 5 cartridges/canister	Z8915



<b>Product</b> <sup>TM</sup>	<b>Code</b>	<b>Unit of Measure</b>	<b>Cat. no.</b>
Plazomicin	PLZ-30	100µg/10µg, 50 disks/ cartridge, 5 cartridges/canister	Z9331
Streptomycin	S-10	10µg, 50 disks/cartridge, 1 cartridge/canister	Z8991
		10µg, 50 disks/cartridge, 5 cartridges/canister	Z8995
Sulfamethoxazole/ Trimethoprim	SXT	1.25µg/23.75µg, 50 disks/ cartridge, 1 cartridge/canister	Z9011
		1.25µg/23.75µg, 50 disks/ cartridge, 5 cartridges/canister	Z9015
Sulfisoxazole	G-0.25	250µg, 50 disks/cartridge, 5 cartridges/canister	Z9075
Tetracycline	Te-30	30µg, 50 disks/cartridge, 1 cartridge/canister	Z9121
		30µg, 50 disks/cartridge, 5 cartridges/canister	Z9125
Tigecycline	TGC-15	15µg, 50 disks/cartridge, 1 cartridge/canister	Z9361
Tobramycin	NN-10	10µg, 50 disks/cartridge, 1 cartridge/canister	Z9171
		10µg, 50 disks/cartridge, 5 cartridges/canister	Z9175
Trimethoprim	TMP-5	5µg, 50 disks/cartridge, 1 cartridge/canister	Z9181
Vancomycin	Va-30	30µg, 50 disks/cartridge, 1 cartridge/canister	Z9241
		30µg, 50 disks/cartridge, 5 cartridges/canister	Z9245



<b>Product</b>	<b>Unit of Measure</b>	<b>Cat. no.</b>
ALA Disks™	50 disks/cartridge, 1 cartridge	Z7081
Bacitracin, 0.04 unit	50 disks/cartridge, 1 cartridge 50 disks/cartridge, 5 cartridges	Z7021 Z7025
Bile Disk	50 disks/cartridge, 1 cartridge	Z7091
Blank Disk, 0.25in	50 disks/cartridge, 1 cartridge	Z7121
Kanamycin, 1000µg	50 disks/cartridge, 1 cartridge	Z7191
Lysostaphin	50 disks/vial	Z112
Nitrate Disks	50 disks/cartridge, 1 cartridge	Z7071
Nitrocef Disks	50 disks/vial	Z7301
Novobiocin, 5µg, NB-5	50 disks/cartridge, 1 cartridge	Z7291
ONPG Disks	50 disks/cartridge, 1 cartridge	Z7321
Optochin	50 disks/cartridge, 1 cartridge 50 disks/cartridge, 5 cartridges	Z7011 Z7015
SPS Disks, 1mg	50 disks/cartridge, 1 cartridge	Z7381
Urea/PDA Disks	50 disks/cartridge, 1 cartridge	Z7331
Vancomycin, 5µg, Va-5	50 disks/cartridge, 1 cartridge	Z7501
V Factor Disks	50 disks/cartridge, 1 cartridge	Z7041
X Factor Disks	50 disks/cartridge, 1 cartridge	Z7031
XV Factor Disks	50 disks/cartridge, 1 cartridge	Z7051

# Sensi-Disc™ by BD

Product	Code	Unit of Measure	Cat. no.
Amikacin	AN-30	30µg, 50 disks, 1 cartridge	231596
Ampicillin	AM-10	10µg, 50 disks, 1 cartridge	230705
Augmentin	AmC-30	30µg, 50 disks, 1 cartridge	231628
Aztreonam	ATM-30	30µg, 50 disks, 1 cartridge	231640
Bacitracin	B-10	10µg, 50 disks, 1 cartridge	230721
Cefazolin	CZ-30	30µg, 50 disks, 1 cartridge	231592
Cefepime	FEP-30	30µg, 50 disks, 1 cartridge	231695
Cefixime	CFM-5	5µg, 50 disks, 1 cartridge	231663
Cefoperazone	CFP-75	75µg, 50 disks, 1 cartridge	231612
Cefotaxime	CTX-30	30µg, 50 disks, 1 cartridge	231606
Cefotaxime/ Clavulanic acid	CTX/ CLA	30µg/10µg, 50 disks, 1 cartridge	231751
Cefoxitin	FOX-30	30µg, 50 disks, 1 cartridge	231590
Cefpodoxime	CPD-10	10µg, 50 disks, 1 cartridge	231673
Ceftazidime	CAZ-30	30µg, 50 disks, 1 cartridge	231632
Ceftazidime/ Clavulanic acid	CAZ/ CLA	30µg/10µg, 50 disks, 1 cartridge	231753
Ceftriaxone	CRO-30	30µg, 50 disks, 1 cartridge	231634
Cefuroxime	CXM-30	30µg, 50 disks, 1 cartridge	231620
Cephalothin	CF-30	30µg, 50 disks, 1 cartridge	230725
Chloramphenicol	C-30	30µg, 50 disks, 1 cartridge	230733
Clindamycin	CC-2	2µg, 50 disks, 1 cartridge	231213
Colistin	CL-10	10µg, 50 disks, 1 cartridge	230749
Doxycycline	D-30	30µg, 50 disks, 1 cartridge	230777
Enrofloxacin	ENO-5	5µg, 50 disks, 1 cartridge	231717
Ertapenem	ETP-10	10µg, 50 disks, 1 cartridge	232174
Erythromycin	E-15	15µg, 50 disks, 1 cartridge	230793

# Sensi-Disc™ by BD

Product	Code	Unit of Measure	Cat. no.
Ethambutol (Myambutol™)	EM-50	50µg, 50 disks, 1 cartridge	231576
Fosfomycin	FOS200	200µg, 50 disks, 1 cartridge	231709
Gentamicin	GM-10 GM-120	10µg, 50 disks, 1 cartridge 120µg, 50 disks, 1 cartridge	231227 231693
Imipenem	IPM-10	10µg, 50 disks, 1 cartridge	231644
Levofloxacin	LVX-5	5µg, 50 disks, 1 cartridge	231705
Linezolid	LZD-30	30µg, 50 disks, 1 cartridge	231761
Meropenem	MEM-10	10µg, 50 disks, 1 cartridge	231704
Metronidazole	MET-80	80µg, 50 disks, 1 cartridge	231604
Mezlocillin	MZ-75	75µg, 50 disks, 1 cartridge	231614
Minocycline	MI-30	30µg, 50 disks, 1 cartridge	231250
Neomycin	N-30	30µg, 50 disks, 1 cartridge	230882
Nitrofurantoin	F/M-300	300µg, 50 disks, 1 cartridge	231149
Ofloxacin	OFX-5	5µg, 50 disks, 1 cartridge	231671
Oxacillin	OX-1	1µg, 50 disks, 1 cartridge	230906
Penicillin	P-10	10µg, 50 disks, 1 cartridge	230918
Piperacillin	PIP-100	100µg, 50 disks, 1 cartridge	231608
Piperacillin/ Tazobactam	TZP-110	110µg, 50 disks, 1 cartridge	231691
Polymyxin B	PB-300	300µg, 50 disks, 1 cartridge	230926
Quinupristin- Dalfopristin (Synercid)	SYN-15	15µg, 50 disks, 1 cartridge	231720
Rifampin	RA-5	5µg, 50 disks, 1 cartridge	231541
Streptomycin	S-10 S-300	10µg, 50 disks, 1 cartridge 300µg, 50 disks, 1 cartridge	230942 231694

Product	Code	Unit of Measure	Cat. no.
Sulfa/Trimethoprim	SXT	23.75µg/1.25µg, 50 disks, 1 cartridge	231536
Tetracycline	Te-30	30µg, 50 disks, 1 cartridge	230998
Tigecycline	TGC-15	15µg, 50 disks, 1 cartridge	232087
Tobramycin	NN-10	10µg, 50 disks, 1 cartridge	231568
Trimethoprim	TMP-5	5µg, 50 disks, 1 cartridge	231600
Vancomycin	Va-30	30µg, 50 disks, 1 cartridge	231034

## Culture Media for AST

Product	Unit of Measure	Cat. no.
BHI (Brain Heart Infusion) Broth	16x100mm tube, 5ml, 20 tubes/package	K27
Haemophilus Test Medium Agar	100mm plate, 10 plates/pack 150mm plate, 10 plates/pack	G33 H07
Mueller Hinton Agar	100mm plate, 10 plates/package 150mm plate, 10 plates/package	G45 H11
Mueller Hinton Broth	13x100mm tube, 3ml, 20 tubes/pack 16x100mm tube, 5ml, 20 tubes/pack 16x125mm tube, 10ml, 20 tubes/pack	R38 K91 K38
Mueller Hinton Agar with 5% Sheep Blood	100mm plate, 10 plates/pack 150mm plate, 10 plates/pack	A59 H21
Saline, 0.85%	16x100mm tube, 5ml, 20 tubes/pack	K59
Chocolate Agar	15x150mm plate, 10 plates/pack	H25
Brucella Agar with Hemin and Vitamin K	15x150mm plate, 10 plates/pack	H05

# Accessory Products



## DesiView™

Desiccant for disk dispensers with color indicator crystals.  
5gm, 10 packets/box  
Each.....**DV10**

Color indicator crystals turn from blue to pink when exposed to moisture.



## Digital Caliper

Digital Caliper for measuring zones  
Battery and NIST traceable certificate included

Each.....**62379531**

12-place  
Dispenser  
Cat. no.  
260640

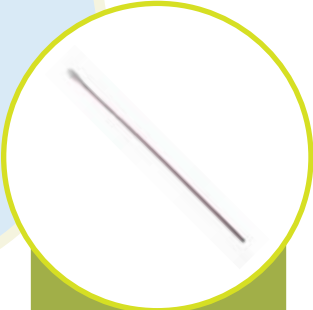


Single Disk  
Dispenser  
Cat. no.  
260457

## Dispensers

Single, metal.....**260457**  
6-place, self-tamping.....**260661**  
8-place, self-tamping.....**260660**  
12-place, self-tamping.....**260640**

# Accessory Products



### Sterile Swabs

Sterile cotton swab, with wood shaft, 6 inches long, 100 envelopes per box.

100 ct.....**HD258061WC**  
 200 ct.....**HD258062WC**

**Wickerham Card**  
 For turbidity reading  
 2in x 3in.

Each.....**Z08**



### Mixer II, Vortex

Analog, variable speed control from 100-3200rpm, 120V, 50/60Hz, 75W.

Each.....**58816121**



### McFarland Standard

Turbidity Standard 0.5

Each.....**ML05**



### Storage Container

Convenient refrigerator see-through container with latch lid, for the storage of up to 45 tubes of the HardyDisks™ 14.1x7.9x4.9.

Each.....**1922**

